

Product datasheet for **CF810102**

SUGT1 Mouse Monoclonal Antibody [Clone ID: OTI7D2]

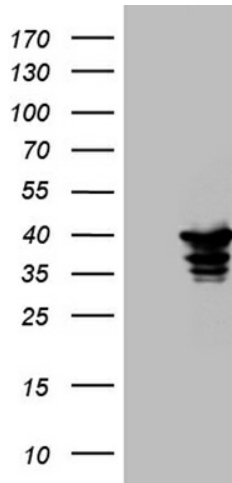
Product data:

Product Type:	Primary Antibodies
Clone Name:	OTI7D2
Applications:	WB
Recommended Dilution:	WB 1:500~2000
Reactivity:	Human, Mouse, Rat
Host:	Mouse
Isotype:	IgG1
Clonality:	Monoclonal
Immunogen:	Full length human recombinant protein of human SUGT1(NP_006695) produced in E.coli.
Formulation:	Lyophilized powder (original buffer 1X PBS, pH 7.3, 8% trehalose)
Reconstitution Method:	For reconstitution, we recommend adding 100uL distilled water to a final antibody concentration of about 1 mg/mL. To use this carrier-free antibody for conjugation experiment, we strongly recommend performing another round of desalting process. (OriGene recommends Zeba Spin Desalting Columns, 7KMWCO from Thermo Scientific)
Purification:	Purified from mouse ascites fluids or tissue culture supernatant by affinity chromatography (protein A/G)
Conjugation:	Unconjugated
Storage:	Store at -20°C as received.
Stability:	Stable for 12 months from date of receipt.
Predicted Protein Size:	37.6 kDa
Gene Name:	SGT1 homolog, MIS12 kinetochore complex assembly cochaperone
Database Link:	NP_006695 Entrez Gene 67955 MouseEntrez Gene 290408 RatEntrez Gene 10910 Human Q9Y2Z0
Synonyms:	SGT1
Protein Pathways:	NOD-like receptor signaling pathway

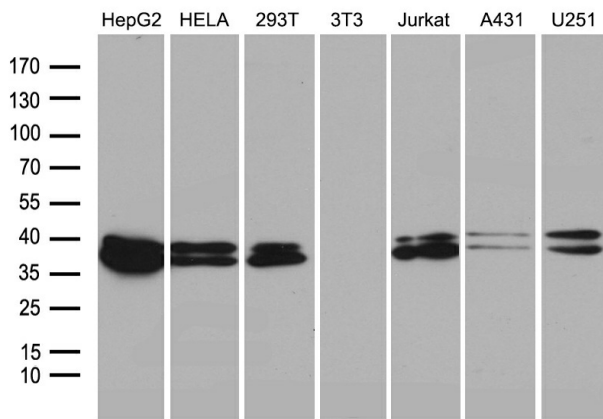


[View online »](#)

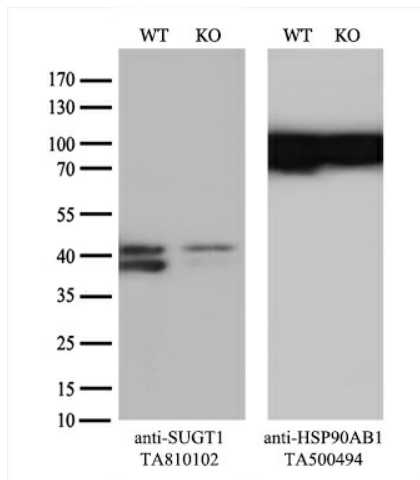
Product images:



HEK293T cells were transfected with the pCMV6-ENTRY control (Cat# [PS100001], Left lane) or pCMV6-ENTRY SUGT1 (Cat# [RC201676], Right lane) cDNA for 48 hrs and lysed. Equivalent amounts of cell lysates (5 ug per lane) were separated by SDS-PAGE and immunoblotted with anti-SUGT1 (Cat# [TA810102])(1:2000). Positive lysates [LY416475] (100ug) and [LC416475] (20ug) can be purchased separately from OriGene.



Western blot analysis of extracts (35ug) from 7 different cell lines by using anti-SUGT1 monoclonal antibody (1:500).



Equivalent amounts of cell lysates (10 ug per lane) of wild-type HeLa cells (WT, Cat# LC810HELA) and SUGT1-Knockout HeLa cells (KO, Cat# [LC833528]) were separated by SDS-PAGE and immunoblotted with anti-SUGT1 monoclonal antibody [TA810102] (1:500). Then the blotted membrane was stripped and reprobed with anti-HSP90 antibody as a loading control.

