

Product datasheet for **CF810063**

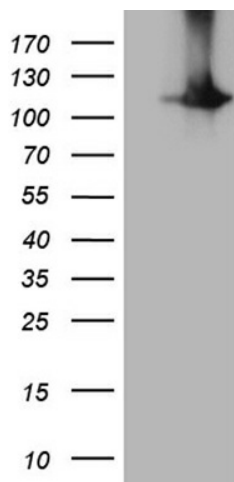
HACE1 Mouse Monoclonal Antibody [Clone ID: OTI4F10]

Product data:

Product Type:	Primary Antibodies
Clone Name:	OTI4F10
Applications:	WB
Recommended Dilution:	WB 1:2000
Reactivity:	Human, Mouse, Rat
Host:	Mouse
Isotype:	IgG1
Clonality:	Monoclonal
Immunogen:	Full length human recombinant protein of human HACE1 (NP_065822) produced in HEK293T cell.
Formulation:	Lyophilized powder (original buffer 1X PBS, pH 7.3, 8% trehalose)
Reconstitution Method:	For reconstitution, we recommend adding 100uL distilled water to a final antibody concentration of about 1 mg/mL. To use this carrier-free antibody for conjugation experiment, we strongly recommend performing another round of desalting process. (OriGene recommends Zeba Spin Desalting Columns, 7KMWCO from Thermo Scientific)
Purification:	Purified from mouse ascites fluids or tissue culture supernatant by affinity chromatography (protein A/G)
Conjugation:	Unconjugated
Storage:	Store at -20°C as received.
Stability:	Stable for 12 months from date of receipt.
Predicted Protein Size:	102.2 kDa
Gene Name:	HECT domain and ankyrin repeat containing E3 ubiquitin protein ligase 1
Database Link:	NP_065822 Entrez Gene 209462 MouseEntrez Gene 361866 RatEntrez Gene 57531 Human Q8IYU2
Synonyms:	E3 ubiquitin protein ligase 1; HECT domain and ankyrin repeat containing
Protein Families:	Druggable Genome



[View online »](#)

Product images:

HEK293T cells were transfected with the pCMV6-ENTRY control (Left lane) or pCMV6-ENTRY HACE1 ([RC205602], Right lane) cDNA for 48 hrs and lysed. Equivalent amounts of cell lysates (5 ug per lane) were separated by SDS-PAGE and immunoblotted with anti-HACE1 (1:2000). Positive lysates [LY412326] (100ug) and [LC412326] (20ug) can be purchased separately from OriGene.