

Product datasheet for **CF810021**

NSD3 (WHSC1L1) Mouse Monoclonal Antibody [Clone ID: OTI3G3]

Product data:

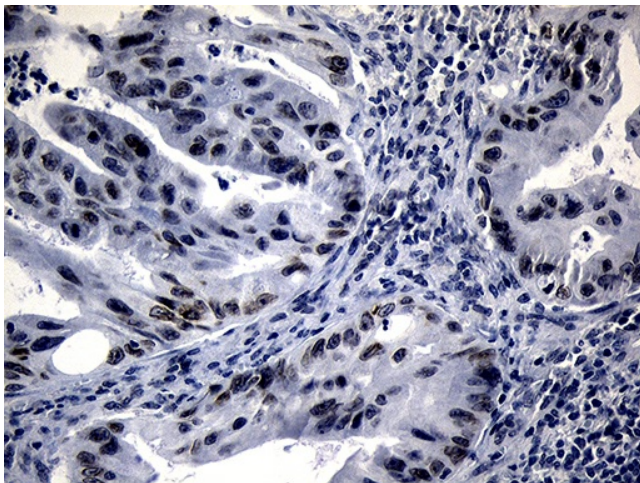
Product Type:	Primary Antibodies
Clone Name:	OTI3G3
Applications:	IHC
Recommended Dilution:	IHC 1:150
Reactivity:	Human
Host:	Mouse
Isotype:	IgG1
Clonality:	Monoclonal
Immunogen:	Human recombinant protein fragment corresponding to amino acids 427-566 of human WHSC1L1(NP_060248) produced in E.coli.
Formulation:	Lyophilized powder (original buffer 1X PBS, pH 7.3, 8% trehalose)
Reconstitution Method:	For reconstitution, we recommend adding 100uL distilled water to a final antibody concentration of about 1 mg/mL. To use this carrier-free antibody for conjugation experiment, we strongly recommend performing another round of desalting process. (OriGene recommends Zeba Spin Desalting Columns, 7KMWCO from Thermo Scientific)
Purification:	Purified from mouse ascites fluids or tissue culture supernatant by affinity chromatography (protein A/G)
Conjugation:	Unconjugated
Storage:	Store at -20°C as received.
Stability:	Stable for 12 months from date of receipt.
Predicted Protein Size:	72.4 kDa
Gene Name:	nuclear receptor binding SET domain protein 3
Database Link:	NP_060248 Entrez Gene 54904 Human Q9BZ95
Synonyms:	NSD3; pp14328
Protein Families:	Druggable Genome, Transcription Factors



[View online »](#)

Protein Pathways: Lysine degradation

Product images:



Immunohistochemical staining of paraffin-embedded Carcinoma of Human spleen tissue using anti-WHSC1L1 mouse monoclonal antibody. Heat-induced epitope retrieval by EDTA solution buffer pH 8.0 at 120°C for 3 min.