

Product datasheet for **CF810020**

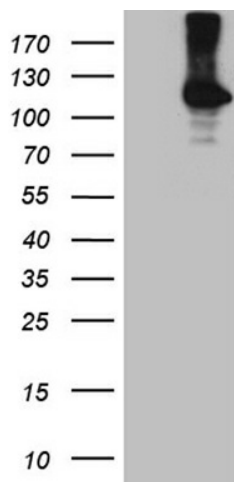
ROR2 Mouse Monoclonal Antibody [Clone ID: OTI4B10]

Product data:

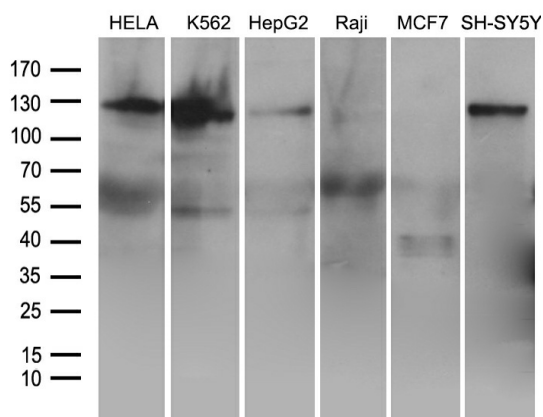
Product Type:	Primary Antibodies
Clone Name:	OTI4B10
Applications:	IHC, WB
Recommended Dilution:	WB 1:500~2000, IHC 1:500
Reactivity:	Human, Mouse, Rat
Host:	Mouse
Isotype:	IgG1
Clonality:	Monoclonal
Immunogen:	Human recombinant protein fragment corresponding to amino acids 796-927 of human ROR2 (NP_004551) produced in E.coli.
Formulation:	Lyophilized powder (original buffer 1X PBS, pH 7.3, 8% trehalose)
Reconstitution Method:	For reconstitution, we recommend adding 100uL distilled water to a final antibody concentration of about 1 mg/mL. To use this carrier-free antibody for conjugation experiment, we strongly recommend performing another round of desalting process. (OriGene recommends Zeba Spin Desalting Columns, 7KMWCO from Thermo Scientific)
Purification:	Purified from mouse ascites fluids or tissue culture supernatant by affinity chromatography (protein A/G)
Conjugation:	Unconjugated
Storage:	Store at -20°C as received.
Stability:	Stable for 12 months from date of receipt.
Predicted Protein Size:	101.3 kDa
Gene Name:	receptor tyrosine kinase like orphan receptor 2
Database Link:	NP_004551 Entrez Gene 26564 Mouse Entrez Gene 306782 Rat Entrez Gene 4920 Human Q01974
Synonyms:	BDB; BDB1; NTRKR2
Protein Families:	Druggable Genome, Protein Kinase, Transmembrane



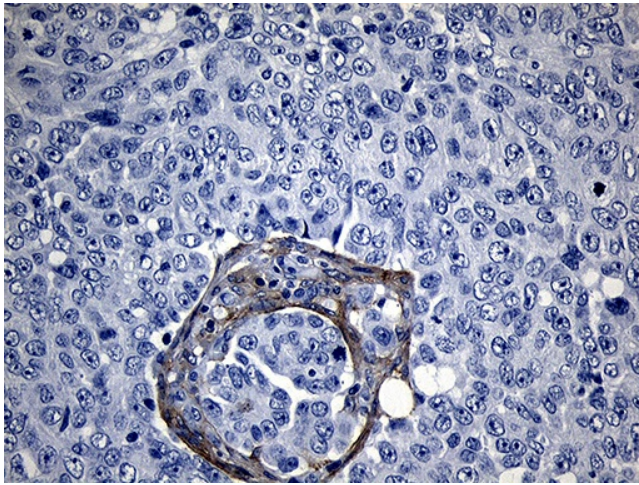
[View online »](#)

Product images:


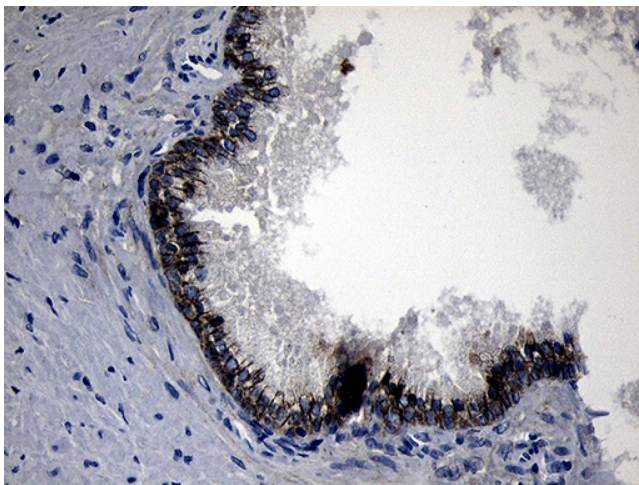
HEK293T cells were transfected with the pCMV6-ENTRY control (Cat# [PS100001], Left lane) or pCMV6-ENTRY ROR2 (Cat# [RC215640], Right lane) cDNA for 48 hrs and lysed. Equivalent amounts of cell lysates (5 ug per lane) were separated by SDS-PAGE and immunoblotted with anti-ROR2 (Cat# [TA810020])(1:2000). Positive lysates [LY417906] (100ug) and [LC417906] (20ug) can be purchased separately from OriGene.



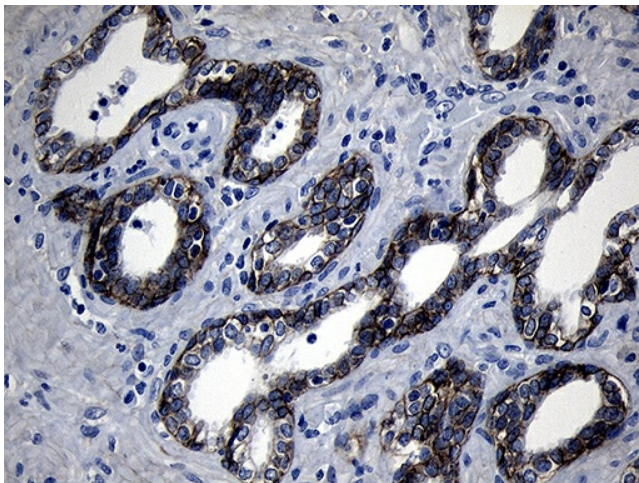
Western blot analysis of extracts (35ug) from 6 different cell lines by using anti-ROR2 monoclonal antibody (1:500).



Immunohistochemical staining of paraffin-embedded Adenocarcinoma of Human ovary tissue using anti-ROR2 mouse monoclonal antibody. Heat-induced epitope retrieval by EDTA solution buffer pH 8.0 at 120°C for 3 min.



Immunohistochemical staining of paraffin-embedded Human prostate tissue within the normal limits using anti-ROR2 mouse monoclonal antibody. Heat-induced epitope retrieval by EDTA solution buffer pH 8.0 at 120°C for 3 min.



Immunohistochemical staining of paraffin-embedded Carcinoma of Human prostate tissue using anti-ROR2 mouse monoclonal antibody. Heat-induced epitope retrieval by EDTA solution buffer pH 8.0 at 120°C for 3 min.