

Product datasheet for **CF809975**

NSD3 (WHSC1L1) Mouse Monoclonal Antibody [Clone ID: OTI1F11]

Product data:

Product Type:	Primary Antibodies
Clone Name:	OTI1F11
Applications:	WB
Recommended Dilution:	WB 1:2000
Reactivity:	Human
Host:	Mouse
Isotype:	IgG1
Clonality:	Monoclonal
Immunogen:	Human recombinant protein fragment corresponding to amino acids 427-566 of human WHSC1L1(NP_060248) produced in E.coli.
Formulation:	Lyophilized powder (original buffer 1X PBS, pH 7.3, 8% trehalose)
Reconstitution Method:	For reconstitution, we recommend adding 100uL distilled water to a final antibody concentration of about 1 mg/mL. To use this carrier-free antibody for conjugation experiment, we strongly recommend performing another round of desalting process. (OriGene recommends Zeba Spin Desalting Columns, 7KMWCO from Thermo Scientific)
Purification:	Purified from mouse ascites fluids or tissue culture supernatant by affinity chromatography (protein A/G)
Conjugation:	Unconjugated
Storage:	Store at -20°C as received.
Stability:	Stable for 12 months from date of receipt.
Predicted Protein Size:	72.4 kDa
Gene Name:	nuclear receptor binding SET domain protein 3
Database Link:	NP_060248 Entrez Gene 54904 Human Q9BZ95



[View online »](#)

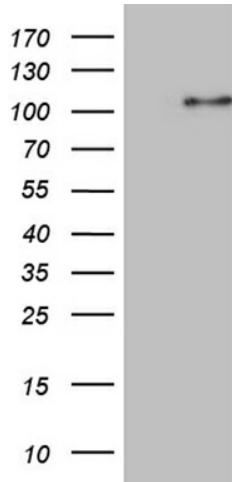
Background: This gene is related to the Wolf-Hirschhorn syndrome candidate-1 gene and encodes a protein with PWWP (proline-tryptophan-tryptophan-proline) domains. The function of the protein has not been determined. Two alternatively spliced variants have been described. [provided by RefSeq, Jul 2008]

Synonyms: NSD3; pp14328

Protein Families: Druggable Genome, Transcription Factors

Protein Pathways: Lysine degradation

Product images:



HEK293T cells were transfected with the pCMV6-ENTRY control (Left lane) or pCMV6-ENTRY WHSC1L1 ([RC212790], Right lane) cDNA for 48 hrs and lysed. Equivalent amounts of cell lysates (5 ug per lane) were separated by SDS-PAGE and immunoblotted with anti-WHSC1L1 (1:2000). Positive lysates [LY413551] (100ug) and [LC413551] (20ug) can be purchased separately from OriGene.