

## Product datasheet for **CF809950**

### **RSK3 (RPS6KA2) Mouse Monoclonal Antibody [Clone ID: OTI3C8]**

#### **Product data:**

<b>Product Type:</b>	Primary Antibodies
<b>Clone Name:</b>	OTI3C8
<b>Applications:</b>	WB
<b>Recommended Dilution:</b>	WB 1:500
<b>Reactivity:</b>	Human, Mouse, Rat
<b>Host:</b>	Mouse
<b>Isotype:</b>	IgG1
<b>Clonality:</b>	Monoclonal
<b>Immunogen:</b>	Human recombinant protein fragment corresponding to amino acids 1-51 of human RPS6KA2(NP_066958) produced in E.coli.
<b>Formulation:</b>	Lyophilized powder (original buffer 1X PBS, pH 7.3, 8% trehalose)
<b>Reconstitution Method:</b>	For reconstitution, we recommend adding 100uL distilled water to a final antibody concentration of about 1 mg/mL. To use this carrier-free antibody for conjugation experiment, we strongly recommend performing another round of desalting process. (OriGene recommends Zeba Spin Desalting Columns, 7KMWCO from Thermo Scientific)
<b>Purification:</b>	Purified from mouse ascites fluids or tissue culture supernatant by affinity chromatography (protein A/G)
<b>Conjugation:</b>	Unconjugated
<b>Storage:</b>	Store at -20°C as received.
<b>Stability:</b>	Stable for 12 months from date of receipt.
<b>Predicted Protein Size:</b>	83.1 kDa
<b>Gene Name:</b>	ribosomal protein S6 kinase A2
<b>Database Link:</b>	<a href="#">NP_066958</a> <a href="#">Entrez Gene 20112 Mouse</a> <a href="#">Entrez Gene 117269 Rat</a> <a href="#">Entrez Gene 6196 Human</a> <a href="#">Q15349</a>



[View online »](#)

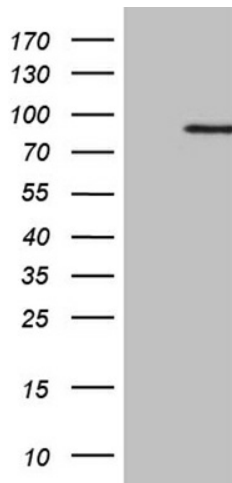
**Background:** This gene encodes a member of the RSK (ribosomal S6 kinase) family of serine/threonine kinases. This kinase contains 2 non-identical kinase catalytic domains and phosphorylates various substrates, including members of the mitogen-activated kinase (MAPK) signalling pathway. The activity of this protein has been implicated in controlling cell growth and differentiation. Alternate transcriptional splice variants, encoding different isoforms, have been characterized. [provided by RefSeq, Jul 2008]

**Synonyms:** HU-2; MAPKAPK1C; p90-RSK3; p90RSK2; pp90RSK3; RSK; RSK3; S6K-alpha; S6K-alpha2

**Protein Families:** Druggable Genome, Protein Kinase

**Protein Pathways:** Long-term potentiation, MAPK signaling pathway, mTOR signaling pathway, Neurotrophin signaling pathway, Oocyte meiosis, Progesterone-mediated oocyte maturation

### Product images:



HEK293T cells were transfected with the pCMV6-ENTRY control (Cat# [PS100001], Left lane) or pCMV6-ENTRY RPS6KA2 (Cat# [RC201835], Right lane) cDNA for 48 hrs and lysed. Equivalent amounts of cell lysates (5 ug per lane) were separated by SDS-PAGE and immunoblotted with anti-RPS6KA2 (Cat# [TA809950])(1:500). Positive lysates [LY402841] (100ug) and [LC402841] (20ug) can be purchased separately from OriGene.