

Product datasheet for **CF809928**

IQGAP1 Mouse Monoclonal Antibody [Clone ID: OTI7F5]

Product data:

Product Type:	Primary Antibodies
Clone Name:	OTI7F5
Applications:	FC, IHC, WB
Recommended Dilution:	WB 1:500~2000, IHC 1:5000
Reactivity:	Human, Mouse, Rat
Host:	Mouse
Isotype:	IgG2b
Clonality:	Monoclonal
Immunogen:	Human recombinant protein fragment corresponding to amino acids 464-609 of human IQGAP1(NP_003861) produced in E.coli.
Formulation:	Lyophilized powder (original buffer 1X PBS, pH 7.3, 8% trehalose)
Reconstitution Method:	For reconstitution, we recommend adding 100uL distilled water to a final antibody concentration of about 1 mg/mL. To use this carrier-free antibody for conjugation experiment, we strongly recommend performing another round of desalting process. (OriGene recommends Zeba Spin Desalting Columns, 7KMWCO from Thermo Scientific)
Purification:	Purified from mouse ascites fluids or tissue culture supernatant by affinity chromatography (protein A/G)
Conjugation:	Unconjugated
Storage:	Store at -20°C as received.
Stability:	Stable for 12 months from date of receipt.
Predicted Protein Size:	189.1 kDa
Gene Name:	IQ motif containing GTPase activating protein 1
Database Link:	NP_003861 Entrez Gene 29875 Mouse Entrez Gene 361598 Rat Entrez Gene 8826 Human P46940



[View online »](#)

Background:

This gene encodes a member of the IQGAP family. The protein contains four IQ domains, one calponin homology domain, one Ras-GAP domain and one WW domain. It interacts with components of the cytoskeleton, with cell adhesion molecules, and with several signaling molecules to regulate cell morphology and motility. Expression of the protein is upregulated by gene amplification in two gastric cancer cell lines. [provided by RefSeq, Jul 2008]

Synonyms:

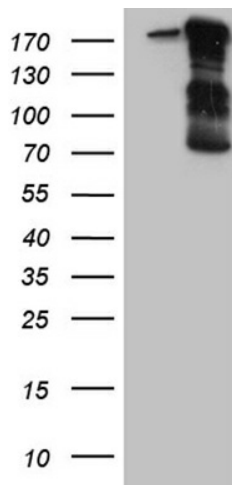
HUMORFA01; p195; SAR1

Protein Families:

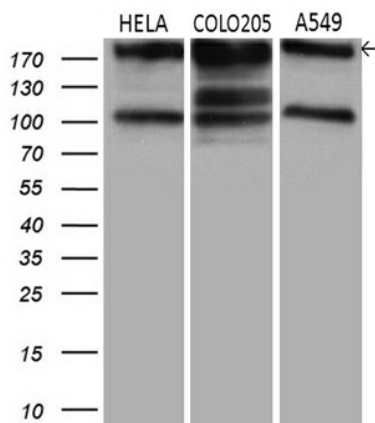
Druggable Genome

Protein Pathways:

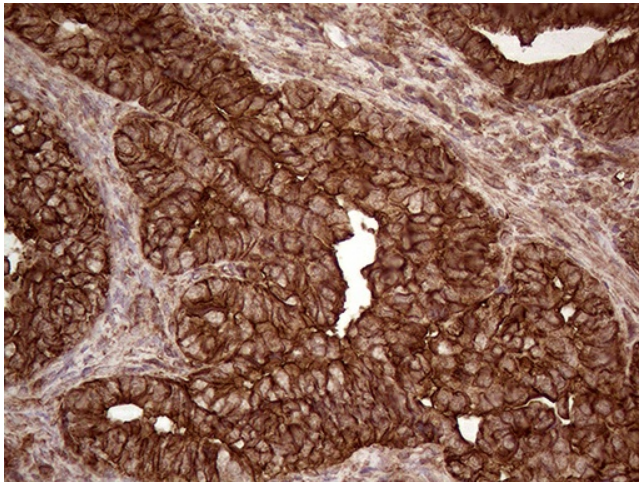
Adherens junction, Regulation of actin cytoskeleton

Product images:


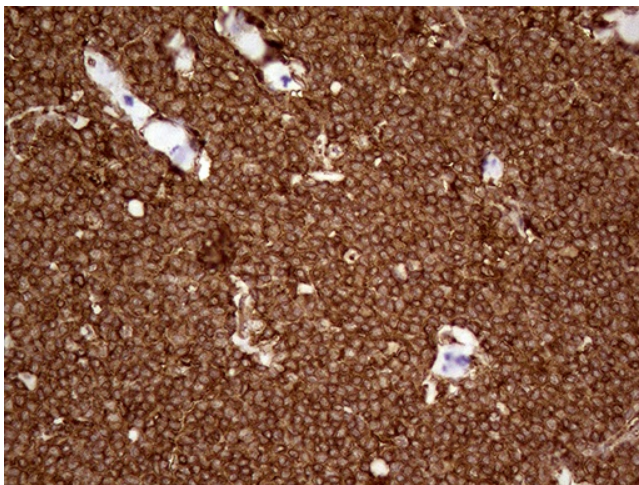
HEK293T cells were transfected with the pCMV6-ENTRY control (Left lane) or pCMV6-ENTRY IQGAP1 ([RC218549], Right lane) cDNA for 48 hrs and lysed. Equivalent amounts of cell lysates (5 ug per lane) were separated by SDS-PAGE and immunoblotted with anti-IQGAP1 (1:2000). Positive lysates [LY418380] (100ug) and [LC418380] (20ug) can be purchased separately from OriGene.



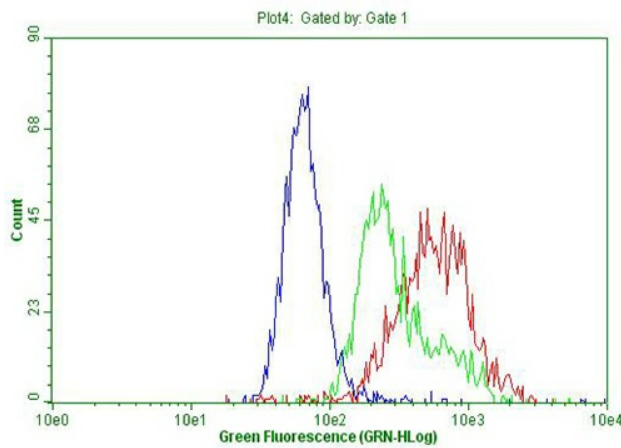
Western blot analysis of extracts (35ug) from 3 different cell lines by using anti-IQGAP1 monoclonal antibody (1:500).



Immunohistochemical staining of paraffin-embedded Adenocarcinoma of Human endometrium tissue using anti-IQGAP1 mouse monoclonal antibody. Heat-induced epitope retrieval by EDTA solution buffer pH 8.0 at 120°C for 3 min.



Immunohistochemical staining of paraffin-embedded Human lymphoma tissue using anti-IQGAP1 mouse monoclonal antibody. Heat-induced epitope retrieval by EDTA solution buffer pH 8.0 at 120°C for 3 min.



Flow cytometric Analysis of permeabilized A549 cells, using anti-IQGAP1 antibody ([TA809928], Red), compared to an IgG isotype control (green), and negative control (PBS, Blue) (1:100).