

Product datasheet for **CF809878**

METTL7A Mouse Monoclonal Antibody [Clone ID: OTI4B10]

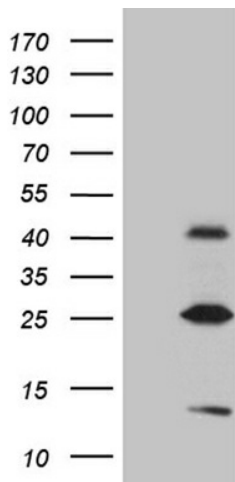
Product data:

Product Type:	Primary Antibodies
Clone Name:	OTI4B10
Applications:	IHC, WB
Recommend Dilution:	WB 1:500~2000, IHC 1:2000
Reactivity:	Human
Host:	Mouse
Isotype:	IgG2a
Clonality:	Monoclonal
Immunogen:	Human recombinant protein fragment corresponding to amino acids 34-104 of human METTL7A(NP_054752) produced in E.coli.
Formulation:	Lyophilized powder (original buffer 1X PBS, pH 7.3, 8% trehalose)
Reconstitution Method:	For reconstitution, we recommend adding 100uL distilled water to a final antibody concentration of about 1 mg/mL. To use this carrier-free antibody for conjugation experiment, we strongly recommend performing another round of desalting process. (OriGene recommends Zeba Spin Desalting Columns, 7KMWCO from Thermo Scientific)
Purification:	Purified from mouse ascites fluids or tissue culture supernatant by affinity chromatography (protein A/G)
Storage:	Store at -20°C as received.
Stability:	Stable for 12 months from date of receipt.
Predicted Protein Size:	28.1 kDa
Gene Name:	Homo sapiens methyltransferase like 7A (METTL7A), mRNA.
Database Link:	NP_054752 Entrez Gene 25840 Human
Background:	Self-associates. [UniProtKB/Swiss-Prot Function]
Synonyms:	AAM-B
Protein Families:	Druggable Genome, Transmembrane

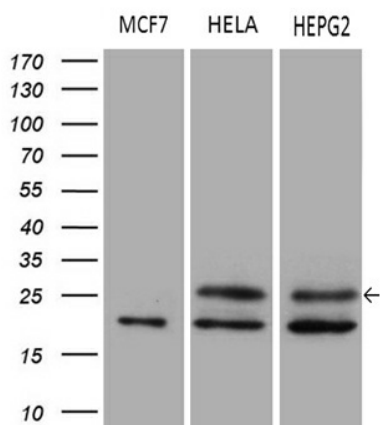


[View online »](#)

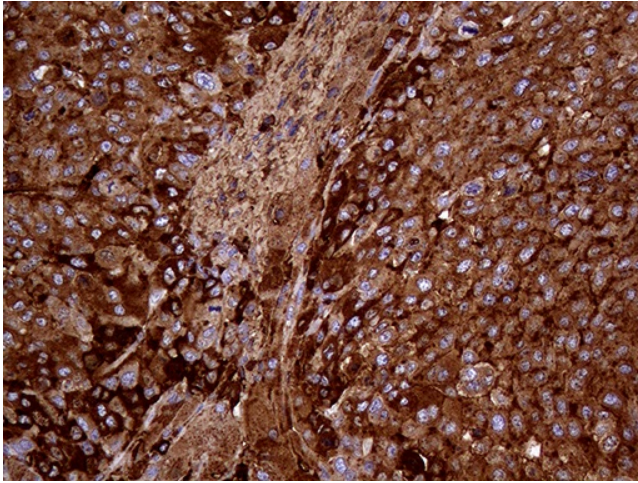
Product images:



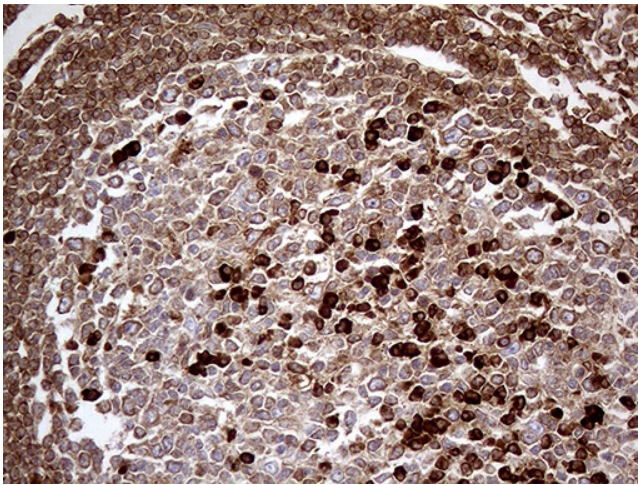
HEK293T cells were transfected with the pCMV6-ENTRY control (Left lane) or pCMV6-ENTRY METTL7A ([RC202601], Right lane) cDNA for 48 hrs and lysed. Equivalent amounts of cell lysates (5 ug per lane) were separated by SDS-PAGE and immunoblotted with anti-METTL7A (1:2000). Positive lysates [LY415471] (100ug) and [LC415471] (20ug) can be purchased separately from OriGene.



Western blot analysis of extracts (35ug) from 3 different cell lines by using anti-METTL7A monoclonal antibody (1:500).



Immunohistochemical staining of paraffin-embedded Carcinoma of Human liver tissue using anti-METTL7A mouse monoclonal antibody. (Heat-induced epitope retrieval by 1mM EDTA in 10mM Tris buffer (pH8.5) at 120°C for 3min, [TA809878]) (1:2000)



Immunohistochemical staining of paraffin-embedded Human lymph node tissue within the normal limits using anti-METTL7A mouse monoclonal antibody. (Heat-induced epitope retrieval by 1mM EDTA in 10mM Tris buffer (pH8.5) at 120°C for 3min, [TA809878]) (1:2000)