

Product datasheet for **CF809860**

FYCO1 Mouse Monoclonal Antibody [Clone ID: OTI8G7]

Product data:

Product Type:	Primary Antibodies
Clone Name:	OTI8G7
Applications:	WB
Recommended Dilution:	WB 1:2000
Reactivity:	Human
Host:	Mouse
Isotype:	IgG1
Clonality:	Monoclonal
Immunogen:	Human recombinant protein fragment corresponding to amino acids 1102-1187 of human FYCO1(NP_078789) produced in E.coli.
Formulation:	Lyophilized powder (original buffer 1X PBS, pH 7.3, 8% trehalose)
Reconstitution Method:	For reconstitution, we recommend adding 100uL distilled water to a final antibody concentration of about 1 mg/mL. To use this carrier-free antibody for conjugation experiment, we strongly recommend performing another round of desalting process. (OriGene recommends Zeba Spin Desalting Columns, 7KMWCO from Thermo Scientific)
Purification:	Purified from mouse ascites fluids or tissue culture supernatant by affinity chromatography (protein A/G)
Conjugation:	Unconjugated
Storage:	Store at -20°C as received.
Stability:	Stable for 12 months from date of receipt.
Predicted Protein Size:	166.8 kDa
Gene Name:	FYVE and coiled-coil domain autophagy adaptor 1
Database Link:	NP_078789 Entrez Gene 79443 Human Q9BQS8



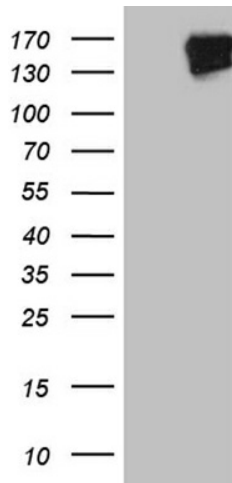
[View online »](#)

Background:

This gene encodes a protein that contains a RUN domain, FYVE-type zinc finger domain and Golgi dynamics (GOLD) domain. The encoded protein plays a role in microtubule plus end-directed transport of autophagic vesicles through interactions with the small GTPase Rab7, phosphatidylinositol-3-phosphate (PI3P) and the autophagosome marker LC3. Mutations in this gene are a cause of autosomal recessive congenital cataract-2 (CATC2). [provided by RefSeq, Dec 2011]

Synonyms:

CATC2; CTRCT18; RUFY3; ZFYVE7

Product images:

HEK293T cells were transfected with the pCMV6-ENTRY control (Cat# [PS100001], Left lane) or pCMV6-ENTRY FYCO1 (Cat# [RC215323], Right lane) cDNA for 48 hrs and lysed. Equivalent amounts of cell lysates (5 ug per lane) were separated by SDS-PAGE and immunoblotted with anti-FYCO1 (Cat# [TA809860])(1:2000). Positive lysates [LY411258] (100ug) and [LC411258] (20ug) can be purchased separately from OriGene.