

## Product datasheet for **CF809848**

### Semaphorin 4D (SEMA4D) Mouse Monoclonal Antibody [Clone ID: OTI6G1]

#### Product data:

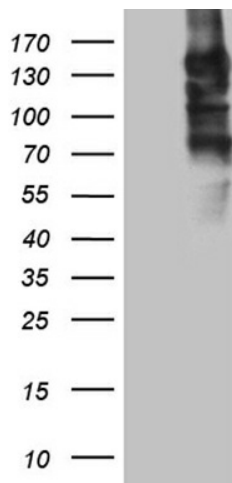
|                         |  |
|-------------------------|--|
| Product Type:           | Primary Antibodies   |
| Clone Name:             | OTI6G1   |
| Applications:           | IHC, WB  |
| Recommended Dilution:   | WB 1:2000, IHC 1:2000  |
| Reactivity:             | Human, Mouse   |
| Host:                   | Mouse  |
| Isotype:                | IgG2b  |
| Clonality:              | Monoclonal   |
| Immunogen:              | Full length human recombinant protein of human SEMA4D (NP_006369) produced in HEK293T cell.  |
| Formulation:            | Lyophilized powder (original buffer 1X PBS, pH 7.3, 8% trehalose)  |
| Reconstitution Method:  | For reconstitution, we recommend adding 100uL distilled water to a final antibody concentration of about 1 mg/mL. To use this carrier-free antibody for conjugation experiment, we strongly recommend performing another round of desalting process. (OriGene recommends Zeba Spin Desalting Columns, 7KMWCO from Thermo Scientific) |
| Purification:           | Purified from mouse ascites fluids or tissue culture supernatant by affinity chromatography (protein A/G)  |
| Conjugation:            | Unconjugated   |
| Storage:                | Store at -20°C as received.  |
| Stability:              | Stable for 12 months from date of receipt.   |
| Predicted Protein Size: | 96 kDa   |
| Gene Name:              | semaphorin 4D  |
| Database Link:          | <a href="#">NP_006369</a><br><a href="#">Entrez Gene 10507 Human</a><br><a href="#">Q92854</a>   |
| Synonyms:               | C9orf164; CD100; coll-4; M-sema-G; SEMAJ   |
| Protein Families:       | Druggable Genome, Transmembrane  |



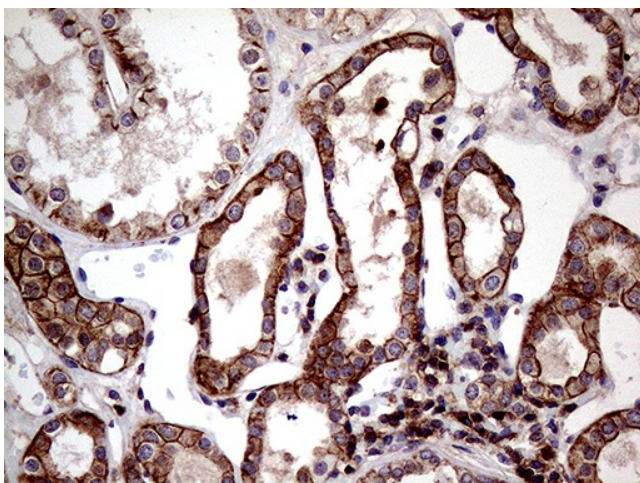
[View online »](#)

Protein Pathways: Axon guidance

### Product images:



HEK293T cells were transfected with the pCMV6-ENTRY control (Left lane) or pCMV6-ENTRY SEMA4D ([RC208521], Right lane) cDNA for 48 hrs and lysed. Equivalent amounts of cell lysates (5 ug per lane) were separated by SDS-PAGE and immunoblotted with anti-SEMA4D (1:2000). Positive lysates [LY416686] (100ug) and [LC416686] (20ug) can be purchased separately from OriGene.



Immunohistochemical staining of paraffin-embedded Human Kidney tissue within the normal limits using anti-SEMA4D mouse monoclonal antibody. (Heat-induced epitope retrieval by 1mM EDTA in 10mM Tris buffer (pH8.5) at 120°C for 3min, [TA809848]) (1:2000)