

Product datasheet for **CF809840**

CBR1 Mouse Monoclonal Antibody [Clone ID: OTI4B4]

Product data:

| | |
|-------------------------|--|
| Product Type: | Primary Antibodies |
| Clone Name: | OTI4B4 |
| Applications: | IHC, WB |
| Recommended Dilution: | WB 1:500~2000, IHC 1:2000 |
| Reactivity: | Human, Mouse, Rat |
| Host: | Mouse |
| Isotype: | IgG1 |
| Clonality: | Monoclonal |
| Immunogen: | Full length human recombinant protein of human CBR1 (NP_001748) produced in HEK293T cell. |
| Formulation: | Lyophilized powder (original buffer 1X PBS, pH 7.3, 8% trehalose) |
| Reconstitution Method: | For reconstitution, we recommend adding 100uL distilled water to a final antibody concentration of about 1 mg/mL. To use this carrier-free antibody for conjugation experiment, we strongly recommend performing another round of desalting process. (OriGene recommends Zeba Spin Desalting Columns, 7KMWCO from Thermo Scientific) |
| Purification: | Purified from mouse ascites fluids or tissue culture supernatant by affinity chromatography (protein A/G) |
| Conjugation: | Unconjugated |
| Storage: | Store at -20°C as received. |
| Stability: | Stable for 12 months from date of receipt. |
| Predicted Protein Size: | 30.2 kDa |
| Gene Name: | carbonyl reductase 1 |
| Database Link: | NP_001748 Entrez Gene 12408 Mouse Entrez Gene 29224 Rat Entrez Gene 873 Human P16152 |



[View online »](#)

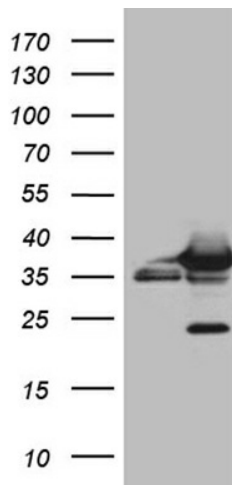
Background: The protein encoded by this gene belongs to the short-chain dehydrogenases/reductases (SDR) family, which function as NADPH-dependent oxidoreductases having wide specificity for carbonyl compounds, such as quinones, prostaglandins, and various xenobiotics. Alternatively spliced transcript variants have been found for this gene. [provided by RefSeq, Nov 2013]

Synonyms: CBR; hCBR1; SDR21C1

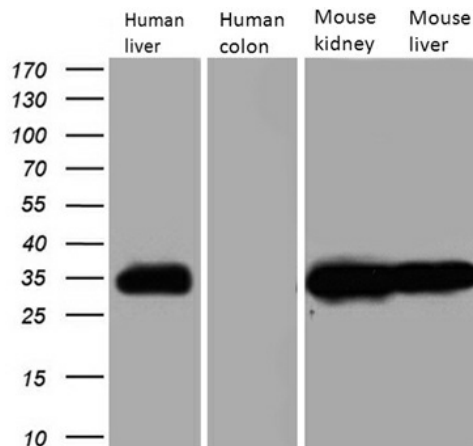
Protein Families: Druggable Genome

Protein Pathways: Arachidonic acid metabolism, Metabolic pathways

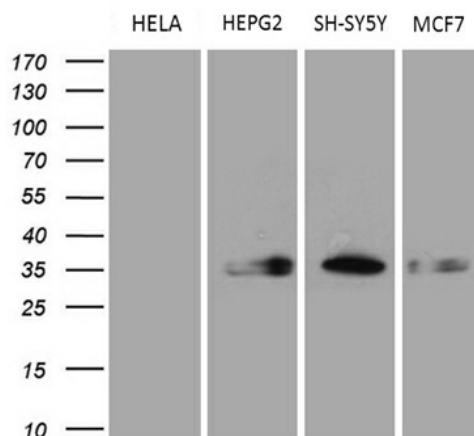
Product images:



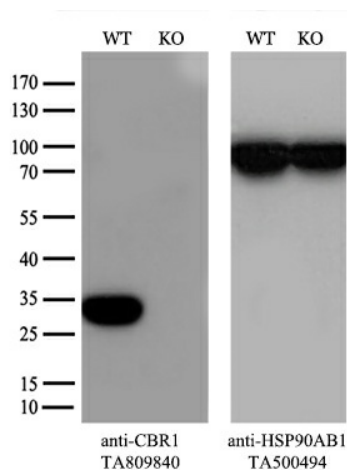
HEK293T cells were transfected with the pCMV6-ENTRY control (Cat# [PS100001], Left lane) or pCMV6-ENTRY CBR1 (Cat# [RC204950], Right lane) cDNA for 48 hrs and lysed. Equivalent amounts of cell lysates (5 ug per lane) were separated by SDS-PAGE and immunoblotted with anti-CBR1 (Cat# [TA809840])(1:2000). Positive lysates [LY400669] (100ug) and [LC400669] (20ug) can be purchased separately from OriGene.



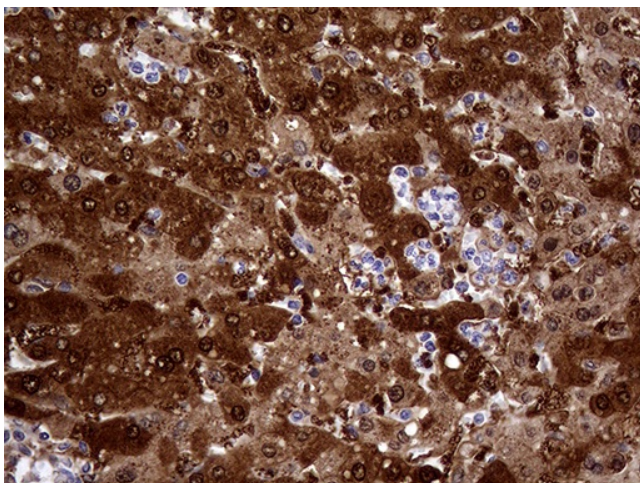
Western blot analysis of extracts (35ug) from 4 different tissue lysates by using anti-CBR1 monoclonal antibody (1:500).



Western blot analysis of extracts (35ug) from 4 different cell lines by using anti-CBR1 monoclonal antibody (1:500).



Equivalent amounts of cell lysates (10 ug per lane) of wild-type A549 cells and CBR1-Knockout A549 cells (KO, Cat# [LC800036]) were separated by SDS-PAGE and immunoblotted with anti-CBR1 monoclonal antibody [TA809840] (1:500). Then the blotted membrane was stripped and reprobed with anti-HSP90 antibody as a loading control.



Immunohistochemical staining of paraffin-embedded Carcinoma of Human liver tissue using anti-CBR1 mouse monoclonal antibody. (Heat-induced epitope retrieval by 1mM EDTA in 10mM Tris buffer (pH8.5) at 120°C for 3min, [TA809840]) (1:2000)