

Product datasheet for **CF809831**

SIRT1 Mouse Monoclonal Antibody [Clone ID: OT11H1]

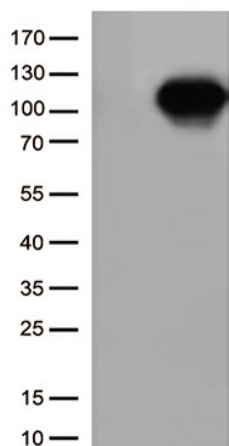
Product data:

| | |
|-------------------------|--------------------------------------------------------------------------------------------------------------------------------------------------------------------------------------------------------------------------------------------------------------------------------------------------------------------------------------|
| Product Type: | Primary Antibodies |
| Clone Name: | OT11H1 |
| Applications: | WB |
| Recommended Dilution: | WB 1:500~2000 |
| Reactivity: | Human, Mouse, Rat |
| Host: | Mouse |
| Isotype: | IgG1 |
| Clonality: | Monoclonal |
| Immunogen: | Human recombinant protein fragment corresponding to amino acids 552-676 of human SIRT1 (NP_036370) produced in E.coli. |
| Formulation: | Lyophilized powder (original buffer 1X PBS, pH 7.3, 8% trehalose) |
| Reconstitution Method: | For reconstitution, we recommend adding 100uL distilled water to a final antibody concentration of about 1 mg/mL. To use this carrier-free antibody for conjugation experiment, we strongly recommend performing another round of desalting process. (OriGene recommends Zeba Spin Desalting Columns, 7KMWCO from Thermo Scientific) |
| Purification: | Purified from mouse ascites fluids or tissue culture supernatant by affinity chromatography (protein A/G) |
| Conjugation: | Unconjugated |
| Storage: | Store at -20°C as received. |
| Stability: | Stable for 12 months from date of receipt. |
| Predicted Protein Size: | 81.5 kDa |
| Gene Name: | sirtuin 1 |
| Database Link: | NP_036370 Entrez Gene 93759 Mouse Entrez Gene 309757 Rat Entrez Gene 23411 Human Q96EB6 |
| Synonyms: | SIR2; SIR2alpha; SIR2L1 |
| Protein Families: | Druggable Genome, Stem cell - Pluripotency, Transcription Factors |

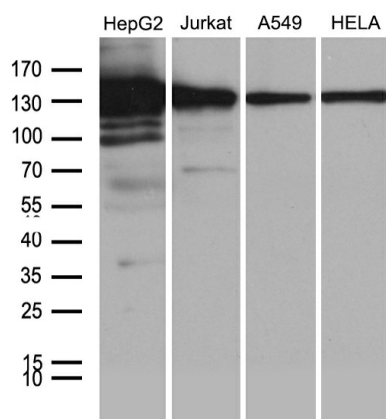


[View online »](#)

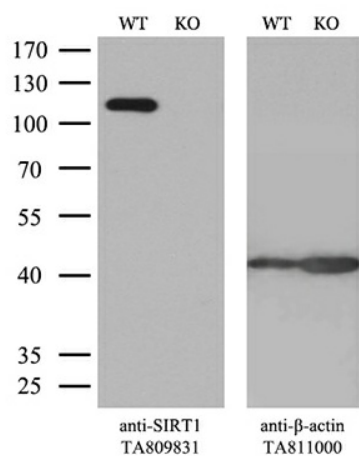
Product images:



HEK293T cells were transfected with the pCMV6-ENTRY control (Left lane) or pCMV6-ENTRY SIRT1 ([RC218134], Right lane) cDNA for 48 hrs and lysed. Equivalent amounts of cell lysates (5 ug per lane) were separated by SDS-PAGE and immunoblotted with anti-SIRT1 (1:1000).



Western blot analysis of extracts (35ug) from 4 different cell lines by using anti-SIRT1 monoclonal antibody (1:500).



Equivalent amounts of cell lysates (10 ug per lane) of wild-type HeLa cells (WT, Cat# LC810HELA) and SIRT1-Knockout HeLa cells (KO, Cat# [LC810336]) were separated by SDS-PAGE and immunoblotted with anti-SIRT1 monoclonal antibody [TA809831]. Then the blotted membrane was stripped and reprobed with anti-β-actin antibody ([TA811000]) as a loading control (1:500).