

## Product datasheet for **CF809704**

### L3MBTL3 Mouse Monoclonal Antibody [Clone ID: OTI6D7]

#### Product data:

Product Type:	Primary Antibodies
Clone Name:	OTI6D7
Applications:	IHC, WB
Recommended Dilution:	WB 1:2000, IHC 1:1000
Reactivity:	Human, Mouse, Rat
Host:	Mouse
Isotype:	IgG1
Clonality:	Monoclonal
Immunogen:	Human recombinant protein fragment corresponding to amino acids 98-319 of human L3MBTL3 (NP_001007103) produced in E.coli.
Formulation:	Lyophilized powder (original buffer 1X PBS, pH 7.3, 8% trehalose)
Reconstitution Method:	For reconstitution, we recommend adding 100uL distilled water to a final antibody concentration of about 1 mg/mL. To use this carrier-free antibody for conjugation experiment, we strongly recommend performing another round of desalting process. (OriGene recommends Zeba Spin Desalting Columns, 7KMWCO from Thermo Scientific)
Purification:	Purified from mouse ascites fluids or tissue culture supernatant by affinity chromatography (protein A/G)
Conjugation:	Unconjugated
Storage:	Store at -20°C as received.
Stability:	Stable for 12 months from date of receipt.
Predicted Protein Size:	85.6 kDa
Gene Name:	L3MBTL histone methyl-lysine binding protein 3
Database Link:	<a href="#">NP_001007103</a> <a href="#">Entrez Gene 237339</a> <a href="#">MouseEntrez Gene 309550</a> <a href="#">RatEntrez Gene 84456</a> <a href="#">Human Q96JM7</a>



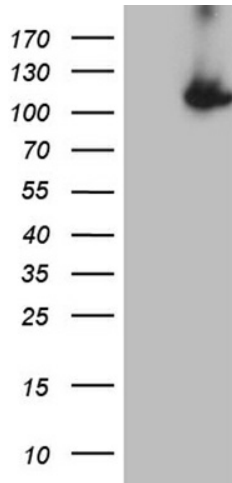
[View online »](#)

**Background:**

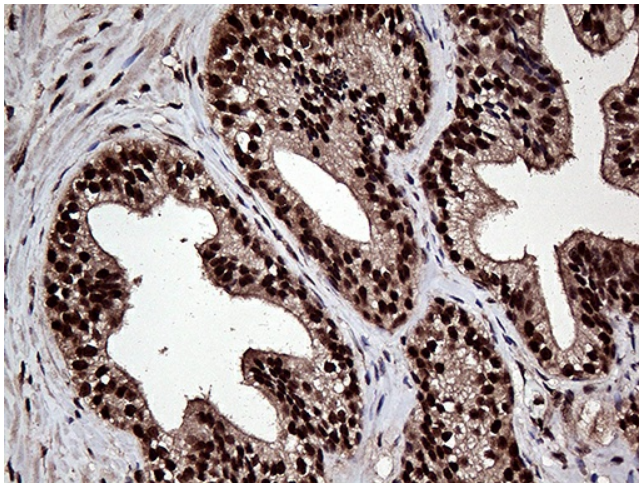
Putative Polycomb group (PcG) protein. PcG proteins maintain the transcriptionally repressive state of genes, probably via a modification of chromatin, rendering it heritably changed in its expressibility. Required for normal maturation of myeloid progenitor cells. [UniProtKB/Swiss-Prot Function]

**Synonyms:**

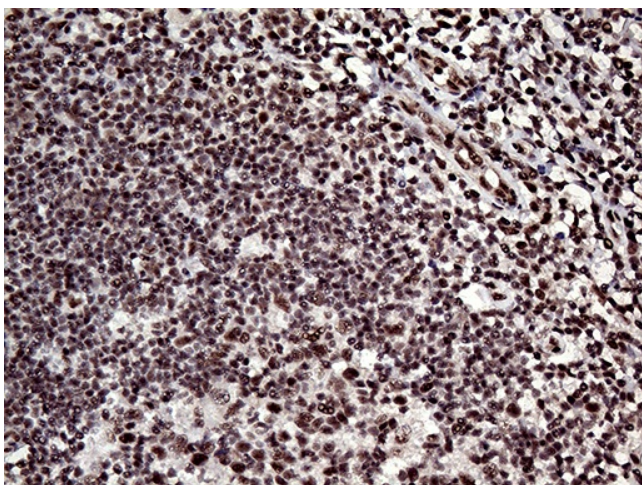
MBT-1; MBT1

**Product images:**


HEK293T cells were transfected with the pCMV6-ENTRY control (Cat# [PS100001], Left lane) or pCMV6-ENTRY L3MBTL3 (Cat# [RC209288], Right lane) cDNA for 48 hrs and lysed. Equivalent amounts of cell lysates (5 ug per lane) were separated by SDS-PAGE and immunoblotted with anti-L3MBTL3 (Cat# [TA809704])(1:2000). Positive lysates [LY422800] (100ug) and [LC422800] (20ug) can be purchased separately from OriGene.



Immunohistochemical staining of paraffin-embedded Carcinoma of Human prostate tissue using anti-L3MBTL3 mouse monoclonal antibody. (Heat-induced epitope retrieval by 1mM EDTA in 10mM Tris buffer (pH8.5) at 120°C for 3min, [TA809704] (1:1000))



Immunohistochemical staining of paraffin-embedded Human lymph node tissue within the normal limits using anti-L3MBTL3 mouse monoclonal antibody. (Heat-induced epitope retrieval by 1mM EDTA in 10mM Tris buffer (pH8.5) at 120°C for 3min, [TA809704]) (1:1000)