

## Product datasheet for **CF809694**

### **PCTAIRE2 (CDK17) Mouse Monoclonal Antibody [Clone ID: OTI2E11]**

#### **Product data:**

<b>Product Type:</b>	Primary Antibodies
<b>Clone Name:</b>	OTI2E11
<b>Applications:</b>	WB
<b>Recommended Dilution:</b>	WB 1:2000
<b>Reactivity:</b>	Human, Mouse, Rat
<b>Host:</b>	Mouse
<b>Isotype:</b>	IgG1
<b>Clonality:</b>	Monoclonal
<b>Immunogen:</b>	Human recombinant protein fragment corresponding to amino acids 6-132 of human CDK17 (NP_001163935) produced in E.coli.
<b>Formulation:</b>	Lyophilized powder (original buffer 1X PBS, pH 7.3, 8% trehalose)
<b>Reconstitution Method:</b>	For reconstitution, we recommend adding 100uL distilled water to a final antibody concentration of about 1 mg/mL. To use this carrier-free antibody for conjugation experiment, we strongly recommend performing another round of desalting process. (OriGene recommends Zeba Spin Desalting Columns, 7KMWCO from Thermo Scientific)
<b>Purification:</b>	Purified from mouse ascites fluids or tissue culture supernatant by affinity chromatography (protein A/G)
<b>Conjugation:</b>	Unconjugated
<b>Storage:</b>	Store at -20°C as received.
<b>Stability:</b>	Stable for 12 months from date of receipt.
<b>Gene Name:</b>	cyclin dependent kinase 17
<b>Database Link:</b>	<a href="#">NP_001163935</a> <a href="#">Entrez Gene 237459 Mouse</a> <a href="#">Entrez Gene 314743 Rat</a> <a href="#">Entrez Gene 5128 Human</a> <a href="#">Q00537</a>
<b>Background:</b>	The protein encoded by this gene belongs to the cdc2/cdkx subfamily of the ser/thr family of protein kinases. It has similarity to a rat protein that is thought to play a role in terminally differentiated neurons. Alternatively spliced transcript variants encoding different isoforms have been found. [provided by RefSeq, Jul 2010]

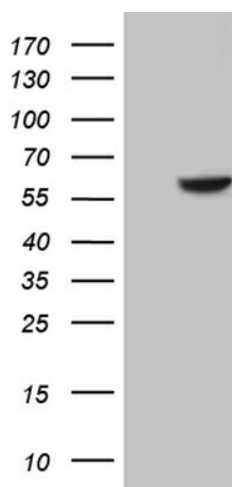


[View online »](#)

Synonyms: PCTAIRE2; PCTK2

Protein Families: Druggable Genome, Protein Kinase

### Product images:



HEK293T cells were transfected with the pCMV6-ENTRY control (Cat# [PS100001], Left lane) or pCMV6-ENTRY CDK17 (Cat# [RC230226], Right lane) cDNA for 48 hrs and lysed. Equivalent amounts of cell lysates (5 ug per lane) were separated by SDS-PAGE and immunoblotted with anti-CDK17 (Cat# [TA809694]). Positive lysates [LY433226] (100ug) and [LC433226] (20ug) can be purchased separately from OriGene.