

Product datasheet for CF809677

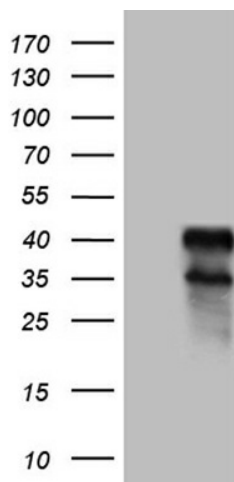
PDCL3 Mouse Monoclonal Antibody [Clone ID: OTI8D6]

Product data:

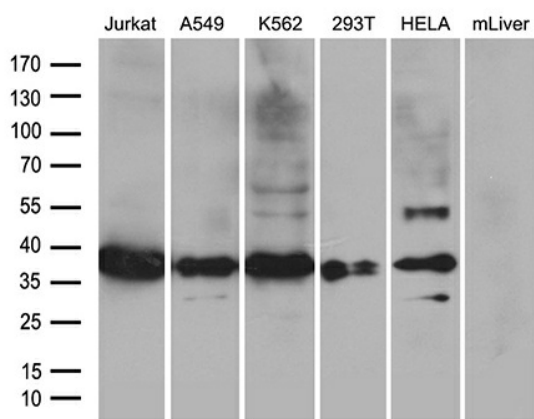
Product Type:	Primary Antibodies
Clone Name:	OTI8D6
Applications:	WB
Recommended Dilution:	WB 1:500~2000
Reactivity:	Human, Mouse, Rat
Host:	Mouse
Isotype:	IgG2a
Clonality:	Monoclonal
Immunogen:	Full length human recombinant protein of human PDCL3 (NP_076970) produced in E.coli.
Formulation:	Lyophilized powder (original buffer 1X PBS, pH 7.3, 8% trehalose)
Reconstitution Method:	For reconstitution, we recommend adding 100uL distilled water to a final antibody concentration of about 1 mg/mL. To use this carrier-free antibody for conjugation experiment, we strongly recommend performing another round of desalting process. (OriGene recommends Zeba Spin Desalting Columns, 7KMWCO from Thermo Scientific)
Purification:	Purified from mouse ascites fluids or tissue culture supernatant by affinity chromatography (protein A/G)
Conjugation:	Unconjugated
Storage:	Store at -20°C as received.
Stability:	Stable for 12 months from date of receipt.
Gene Name:	phosducin like 3
Database Link:	NP_076970 Entrez Gene 68833 Mouse Entrez Gene 316348 Rat Entrez Gene 79031 Human Q9H2J4
Background:	This gene encodes a member of the phosducin-like protein family and is a putative modulator of heterotrimeric G proteins. The protein shares extensive amino acid sequence homology with phosducin. Members of the phosducin-like protein family have been shown to bind to the beta-gamma subunits of G proteins. [provided by RefSeq, Jul 2008]
Synonyms:	HTPHLP; PHLP2A; PHLP3; VIAF; VIAF1


[View online »](#)

Product images:



HEK293T cells were transfected with the pCMV6-ENTRY control (Left lane) or pCMV6-ENTRY PDCL3 ([RC200958], Right lane) cDNA for 48 hrs and lysed. Equivalent amounts of cell lysates (5 ug per lane) were separated by SDS-PAGE and immunoblotted with anti-PDCL3 (1:2000). Positive lysates [LY411381] (100ug) and [LC411381] (20ug) can be purchased separately from OriGene.



Western blot analysis of extracts (35ug) from 5 different cell lines and mouse liver lysate by using anti-PDCL3 monoclonal antibody (1:500).