

## Product datasheet for **CF809661**

### **FRA2 (FOSL2) Mouse Monoclonal Antibody [Clone ID: OTI7E4]**

#### **Product data:**

<b>Product Type:</b>	Primary Antibodies
<b>Clone Name:</b>	OTI7E4
<b>Applications:</b>	WB
<b>Recommended Dilution:</b>	WB 1:500~2000
<b>Reactivity:</b>	Human, Rat, Mouse
<b>Host:</b>	Mouse
<b>Isotype:</b>	IgG1
<b>Clonality:</b>	Monoclonal
<b>Immunogen:</b>	Human recombinant protein fragment corresponding to amino acids 110-326 of human FOSL2 (NP_005244) produced in E.coli.
<b>Formulation:</b>	Lyophilized powder (original buffer 1X PBS, pH 7.3, 8% trehalose)
<b>Reconstitution Method:</b>	For reconstitution, we recommend adding 100uL distilled water to a final antibody concentration of about 1 mg/mL. To use this carrier-free antibody for conjugation experiment, we strongly recommend performing another round of desalting process. (OriGene recommends Zeba Spin Desalting Columns, 7KMWCO from Thermo Scientific)
<b>Purification:</b>	Purified from mouse ascites fluids or tissue culture supernatant by affinity chromatography (protein A/G)
<b>Conjugation:</b>	Unconjugated
<b>Storage:</b>	Store at -20°C as received.
<b>Stability:</b>	Stable for 12 months from date of receipt.
<b>Gene Name:</b>	FOS like 2, AP-1 transcription factor subunit
<b>Database Link:</b>	<a href="#">NP_005244</a> <a href="#">Entrez Gene 14284 Mouse</a> <a href="#">Entrez Gene 25446 Rat</a> <a href="#">Entrez Gene 2355 Human</a> <a href="#">P15408</a>



[View online »](#)

**Background:**

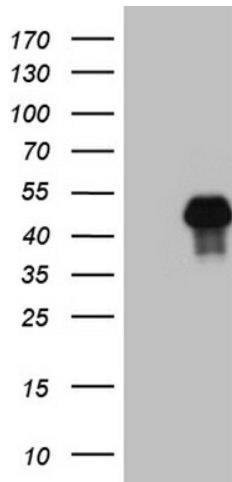
The Fos gene family consists of 4 members: FOS, FOSB, FOSL1, and FOSL2. These genes encode leucine zipper proteins that can dimerize with proteins of the JUN family, thereby forming the transcription factor complex AP-1. As such, the FOS proteins have been implicated as regulators of cell proliferation, differentiation, and transformation. [provided by RefSeq, Jul 2014]

**Synonyms:**

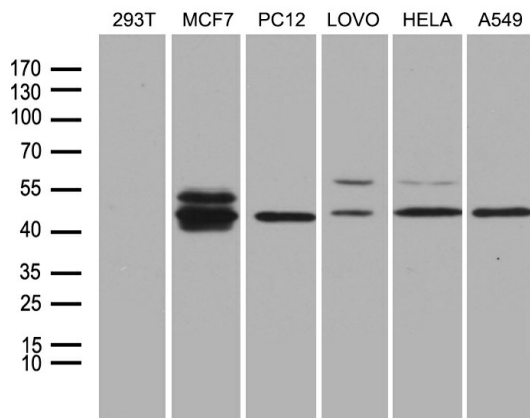
FRA2

**Protein Families:**

Druggable Genome, Transcription Factors

**Product images:**


HEK293T cells were transfected with the pCMV6-ENTRY control (Left lane) or pCMV6-ENTRY FOSL2 ([RC204146], Right lane) cDNA for 48 hrs and lysed. Equivalent amounts of cell lysates (5 ug per lane) were separated by SDS-PAGE and immunoblotted with anti-FOSL2 (1:2000). Positive lysates [LY417421] (100ug) and [LC417421] (20ug) can be purchased separately from OriGene.



Western blot analysis of extracts (35ug) from 6 different cell lines by using anti-FOSL2 monoclonal antibody (1:500).