

## Product datasheet for **CF809580**

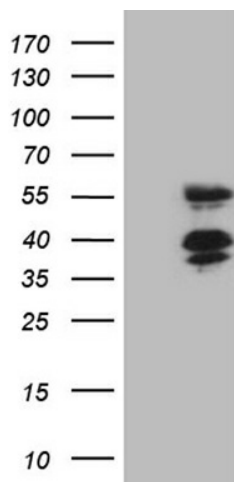
### **FAM170A Mouse Monoclonal Antibody [Clone ID: OTI5A1]**

#### **Product data:**

Product Type:	Primary Antibodies
Clone Name:	OTI5A1
Applications:	WB
Recommended Dilution:	WB 1:2000
Reactivity:	Human
Host:	Mouse
Isotype:	IgG1
Clonality:	Monoclonal
Immunogen:	Full length human recombinant protein of human FAM170A(NP_877438) produced in E.coli.
Formulation:	Lyophilized powder (original buffer 1X PBS, pH 7.3, 8% trehalose)
Reconstitution Method:	For reconstitution, we recommend adding 100uL distilled water to a final antibody concentration of about 1 mg/mL. To use this carrier-free antibody for conjugation experiment, we strongly recommend performing another round of desalting process. (OriGene recommends Zeba Spin Desalting Columns, 7KMWCO from Thermo Scientific)
Purification:	Purified from mouse ascites fluids or tissue culture supernatant by affinity chromatography (protein A/G)
Conjugation:	Unconjugated
Storage:	Store at -20°C as received.
Stability:	Stable for 12 months from date of receipt.
Predicted Protein Size:	36.9 kDa
Gene Name:	family with sequence similarity 170 member A
Database Link:	<a href="#">NP_877438</a> <a href="#">Entrez Gene 340069 Human</a> <a href="#">A1A519</a>
Synonyms:	ZNFD

[View online »](#)

## Product images:



HEK293T cells were transfected with the pCMV6-ENTRY control (Left lane) or pCMV6-ENTRY FAM170A ([RC219166], Right lane) cDNA for 48 hrs and lysed. Equivalent amounts of cell lysates (5 ug per lane) were separated by SDS-PAGE and immunoblotted with anti-FAM170A (1:2000). Positive lysates [LY405332] (100ug) and [LC405332] (20ug) can be purchased separately from OriGene.