

Product datasheet for **CF809573**

Myotilin (MYOT) Mouse Monoclonal Antibody [Clone ID: OTI3D1]

Product data:

| | |
|-------------------------|--|
| Product Type: | Primary Antibodies |
| Clone Name: | OTI3D1 |
| Applications: | WB |
| Recommended Dilution: | WB 1:2000 |
| Reactivity: | Human, Mouse, Rat |
| Host: | Mouse |
| Isotype: | IgG1 |
| Clonality: | Monoclonal |
| Immunogen: | Full length human recombinant protein of human MYOT (NP_006781) produced in E.coli. |
| Formulation: | Lyophilized powder (original buffer 1X PBS, pH 7.3, 8% trehalose) |
| Reconstitution Method: | For reconstitution, we recommend adding 100uL distilled water to a final antibody concentration of about 1 mg/mL. To use this carrier-free antibody for conjugation experiment, we strongly recommend performing another round of desalting process. (OriGene recommends Zeba Spin Desalting Columns, 7KMWCO from Thermo Scientific) |
| Purification: | Purified from mouse ascites fluids or tissue culture supernatant by affinity chromatography (protein A/G) |
| Conjugation: | Unconjugated |
| Storage: | Store at -20°C as received. |
| Stability: | Stable for 12 months from date of receipt. |
| Predicted Protein Size: | 55.2 kDa |
| Gene Name: | myotilin |
| Database Link: | NP_006781 Entrez Gene 9499 Human Q9UBF9 |



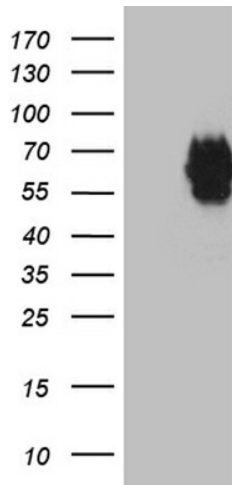
[View online »](#)

Background:

This gene encodes a cytoskeletal protein which plays a significant role in the stability of thin filaments during muscle contraction. This protein binds F-actin, crosslinks actin filaments, and prevents latrunculin A-induced filament disassembly. Mutations in this gene have been associated with limb-girdle muscular dystrophy and myofibrillar myopathies. Several alternatively spliced transcript variants of this gene have been described, but the full-length nature of some of these variants has not been determined. [provided by RefSeq, Oct 2008]

Synonyms:

LGMD1; LGMD1A; MFM3; TTID; TTOD

Product images:

HEK293T cells were transfected with the pCMV6-ENTRY control (Left lane) or pCMV6-ENTRY MYOT ([RC202797], Right lane) cDNA for 48 hrs and lysed. Equivalent amounts of cell lysates (5 ug per lane) were separated by SDS-PAGE and immunoblotted with anti-MYOT (1:2000). Positive lysates [LY402026] (100ug) and [LC402026] (20ug) can be purchased separately from OriGene.