

Product datasheet for **CF809560**

ACVRL1 Mouse Monoclonal Antibody [Clone ID: OTI5C2]

Product data:

Product Type:	Primary Antibodies
Clone Name:	OTI5C2
Applications:	WB
Recommended Dilution:	WB 1:500~2000
Reactivity:	Human, Mouse, Rat
Host:	Mouse
Isotype:	IgG1
Clonality:	Monoclonal
Immunogen:	Human recombinant protein fragment corresponding to amino acids 22-119 of human ACVRL1 (NP_000011) produced in E.coli.
Formulation:	Lyophilized powder (original buffer 1X PBS, pH 7.3, 8% trehalose)
Reconstitution Method:	For reconstitution, we recommend adding 100uL distilled water to a final antibody concentration of about 1 mg/mL. To use this carrier-free antibody for conjugation experiment, we strongly recommend performing another round of desalting process. (OriGene recommends Zeba Spin Desalting Columns, 7KMWCO from Thermo Scientific)
Purification:	Purified from mouse ascites fluids or tissue culture supernatant by affinity chromatography (protein A/G)
Conjugation:	Unconjugated
Storage:	Store at -20°C as received.
Stability:	Stable for 12 months from date of receipt.
Predicted Protein Size:	55.9 kDa
Gene Name:	activin A receptor like type 1
Database Link:	NP_000011 Entrez Gene 11482 Mouse Entrez Gene 25237 Rat Entrez Gene 94 Human P37023



[View online »](#)

Background:

This gene encodes a type I cell-surface receptor for the TGF-beta superfamily of ligands. It shares with other type I receptors a high degree of similarity in serine-threonine kinase subdomains, a glycine- and serine-rich region (called the GS domain) preceding the kinase domain, and a short C-terminal tail. The encoded protein, sometimes termed ALK1, shares similar domain structures with other closely related ALK or activin receptor-like kinase proteins that form a subfamily of receptor serine/threonine kinases. Mutations in this gene are associated with hemorrhagic telangiectasia type 2, also known as Rendu-Osler-Weber syndrome 2. [provided by RefSeq, Jul 2008]

Synonyms:

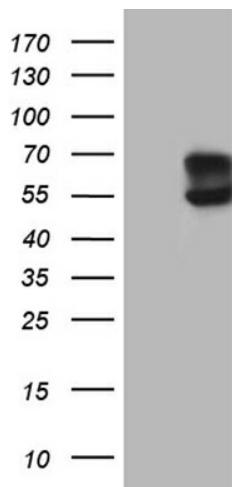
ACVRLK1; ALK-1; ALK1; HHT; HHT2; ORW2; SKR3; TSR-I

Protein Families:

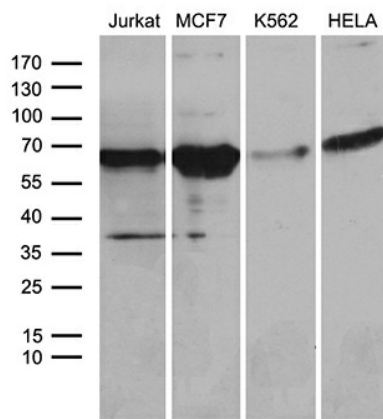
Druggable Genome, Protein Kinase, Transmembrane

Protein Pathways:

Cytokine-cytokine receptor interaction, TGF-beta signaling pathway

Product images:


HEK293T cells were transfected with the pCMV6-ENTRY control (Cat# [PS100001], Left lane) or pCMV6-ENTRY ACVRL1 (Cat# [RC206568], Right lane) cDNA for 48 hrs and lysed. Equivalent amounts of cell lysates (5 ug per lane) were separated by SDS-PAGE and immunoblotted with anti-ACVRL1 (Cat# [TA809560])(1:2000).



Western blot analysis of extracts (35ug) from 4 different cell lines by using anti-ACVRL1 monoclonal antibody (1:500).