

## Product datasheet for **CF809523**

### **DNAAF10 Mouse Monoclonal Antibody [Clone ID: OTI4B9]**

#### **Product data:**

<b>Product Type:</b>	Primary Antibodies
<b>Clone Name:</b>	OTI4B9
<b>Applications:</b>	WB
<b>Recommended Dilution:</b>	WB 1:500~2000
<b>Reactivity:</b>	Human, Mouse, Rat
<b>Host:</b>	Mouse
<b>Isotype:</b>	IgG2b
<b>Clonality:</b>	Monoclonal
<b>Immunogen:</b>	Full length human recombinant protein of human WDR92 (NP_612467) produced in HEK293T cell.
<b>Formulation:</b>	Lyophilized powder (original buffer 1X PBS, pH 7.3, 8% trehalose)
<b>Reconstitution Method:</b>	For reconstitution, we recommend adding 100uL distilled water to a final antibody concentration of about 1 mg/mL. To use this carrier-free antibody for conjugation experiment, we strongly recommend performing another round of desalting process. (OriGene recommends Zeba Spin Desalting Columns, 7KMWCO from Thermo Scientific)
<b>Purification:</b>	Purified from mouse ascites fluids or tissue culture supernatant by affinity chromatography (protein A/G)
<b>Conjugation:</b>	Unconjugated
<b>Storage:</b>	Store at -20°C as received.
<b>Stability:</b>	Stable for 12 months from date of receipt.
<b>Predicted Protein Size:</b>	39.6 kDa
<b>Gene Name:</b>	dynein axonemal assembly factor 10
<b>Database Link:</b>	<a href="#">NP_612467</a> <a href="#">Entrez Gene 103784 Mouse</a> <a href="#">Entrez Gene 498418 Rat</a> <a href="#">Entrez Gene 116143 Human</a> <a href="#">Q96MX6</a>
<b>Background:</b>	This gene encodes a protein with two WD40 repeat domains thought to be involved in an apoptosis via activation of caspase-3. Multiple transcript variants encoding different isoforms have been found for this gene. [provided by RefSeq, Feb 2012]

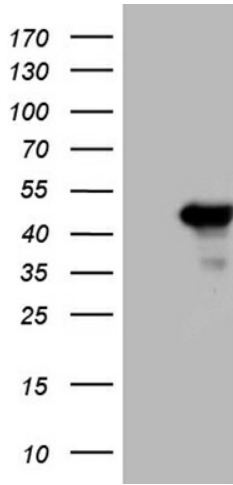


[View online »](#)

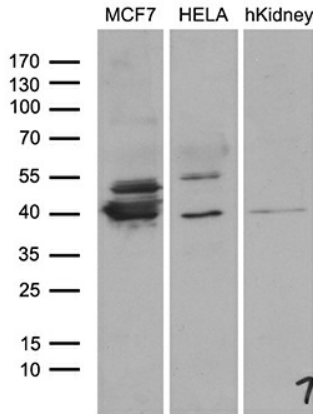
Synonyms: FLJ31741

Protein Families: Druggable Genome

**Product images:**



HEK293T cells were transfected with the pCMV6-ENTRY control (Cat# [PS100001], Left lane) or pCMV6-ENTRY WDR92 (Cat# [RC208985], Right lane) cDNA for 48 hrs and lysed. Equivalent amounts of cell lysates (5 ug per lane) were separated by SDS-PAGE and immunoblotted with anti-WDR92 (Cat# [TA809523])(1:2000). Positive lysates [LY408608] (100ug) and [LC408608] (20ug) can be purchased separately from OriGene.



Western blot analysis of extracts (35ug) from 2 different cell lines and human kidney tissue lysate by using anti-WDR92 monoclonal antibody (1:500).