

Product datasheet for **CF809515**

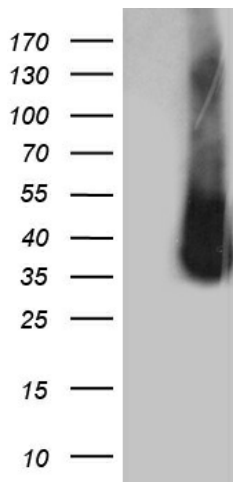
ZCCHC17 Mouse Monoclonal Antibody [Clone ID: OTI1F11]

Product data:

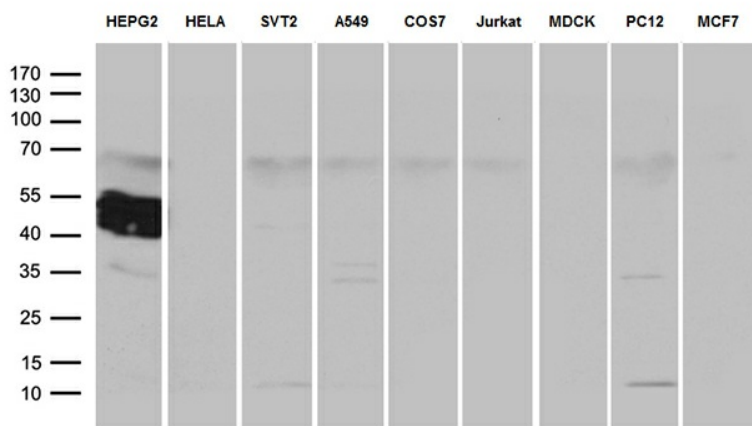
Product Type:	Primary Antibodies
Clone Name:	OTI1F11
Applications:	WB
Recommended Dilution:	WB 1:500~2000
Reactivity:	Human, Mouse, Rat
Host:	Mouse
Isotype:	IgG2a
Clonality:	Monoclonal
Immunogen:	Full length human recombinant protein of human ZCCHC17 (NP_057589) produced in E.coli.
Formulation:	Lyophilized powder (original buffer 1X PBS, pH 7.3, 8% trehalose)
Reconstitution Method:	For reconstitution, we recommend adding 100uL distilled water to a final antibody concentration of about 1 mg/mL. To use this carrier-free antibody for conjugation experiment, we strongly recommend performing another round of desalting process. (OriGene recommends Zeba Spin Desalting Columns, 7KMWCO from Thermo Scientific)
Purification:	Purified from mouse ascites fluids or tissue culture supernatant by affinity chromatography (protein A/G)
Conjugation:	Unconjugated
Storage:	Store at -20°C as received.
Stability:	Stable for 12 months from date of receipt.
Predicted Protein Size:	27.4 kDa
Gene Name:	zinc finger CCHC-type containing 17
Database Link:	NP_057589 Entrez Gene 500555 RatEntrez Gene 619605 MouseEntrez Gene 51538 Human Q9NP64
Synonyms:	HSPC251; pNO40; PS1D



[View online »](#)

Product images:


HEK293T cells were transfected with the pCMV6-ENTRY control (Cat# [PS100001], Left lane) or pCMV6-ENTRY ZCCHC17 (Cat# [RC208652], Right lane) cDNA for 48 hrs and lysed. Equivalent amounts of cell lysates (5 ug per lane) were separated by SDS-PAGE and immunoblotted with anti-ZCCHC17 (Cat# [TA809515])(1:2000). Positive lysates [LY413942] (100ug) and [LC413942] (20ug) can be purchased separately from OriGene.



Western blot analysis of extracts (35ug) from 9 different cell lines by using anti-ZCCHC17 monoclonal antibody (1:500).