

## Product datasheet for **CF809505**

### RRAS Mouse Monoclonal Antibody [Clone ID: OTI2B7]

#### Product data:

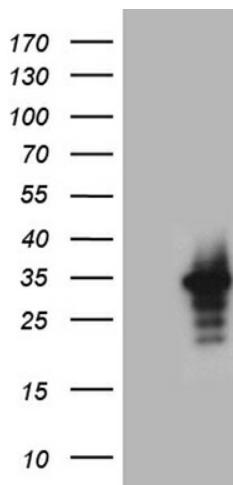
Product Type:	Primary Antibodies
Clone Name:	OTI2B7
Applications:	WB
Recommended Dilution:	WB 1:500~2000
Reactivity:	Human, Mouse, Rat
Host:	Mouse
Isotype:	IgG2b
Clonality:	Monoclonal
Immunogen:	Full length human recombinant protein of human RRAS (NP_006261) produced in HEK293T cell.
Formulation:	Lyophilized powder (original buffer 1X PBS, pH 7.3, 8% trehalose)
Reconstitution Method:	For reconstitution, we recommend adding 100uL distilled water to a final antibody concentration of about 1 mg/mL. To use this carrier-free antibody for conjugation experiment, we strongly recommend performing another round of desalting process. (OriGene recommends Zeba Spin Desalting Columns, 7KMWCO from Thermo Scientific)
Purification:	Purified from mouse ascites fluids or tissue culture supernatant by affinity chromatography (protein A/G)
Conjugation:	Unconjugated
Storage:	Store at -20°C as received.
Stability:	Stable for 12 months from date of receipt.
Predicted Protein Size:	23.3 kDa
Gene Name:	RAS related
Database Link:	<a href="#">NP_006261</a> <a href="#">Entrez Gene 361568 Rat</a> <a href="#">Entrez Gene 6237 Human</a> <a href="#">P10301</a>
Synonyms:	Oncogene RRAS; related RAS viral (r-ras) oncogene homolog
Protein Families:	Druggable Genome



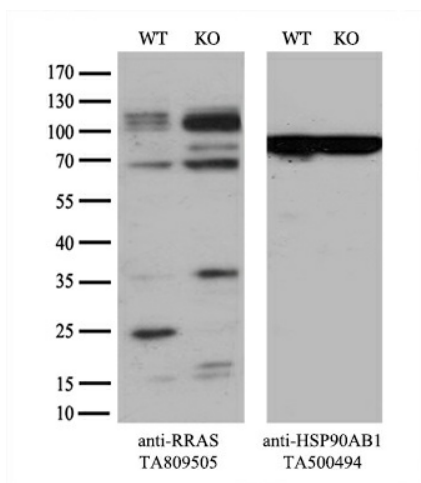
[View online »](#)

**Protein Pathways:** MAPK signaling pathway, Regulation of actin cytoskeleton, Tight junction

**Product images:**



HEK293T cells were transfected with the pCMV6-ENTRY control (Cat# [PS100001], Left lane) or pCMV6-ENTRY RRAS (Cat# [RC204820], Right lane) cDNA for 48 hrs and lysed. Equivalent amounts of cell lysates (5 ug per lane) were separated by SDS-PAGE and immunoblotted with anti-RRAS (Cat# [TA809505])(1:2000). Positive lysates [LY416758] (100ug) and [LC416758] (20ug) can be purchased separately from OriGene.



Equivalent amounts of cell lysates (10 ug per lane) of wild-type HeLa cells (WT, Cat# LC810HELA) and RRAS-Knockout HeLa cells (KO, Cat# [LC831537]) were separated by SDS-PAGE and immunoblotted with anti-RRAS monoclonal antibody [TA809505] (1:500). Then the blotted membrane was stripped and reprobed with anti-HSP90 antibody as a loading control.