

## Product datasheet for **CF809501**

### GCNF (NR6A1) Mouse Monoclonal Antibody [Clone ID: OTI6F3]

#### Product data:

Product Type:	Primary Antibodies
Clone Name:	OTI6F3
Applications:	WB
Recommended Dilution:	WB 1:2000
Reactivity:	Human, Mouse, Rat
Host:	Mouse
Isotype:	IgG1
Clonality:	Monoclonal
Immunogen:	Human recombinant protein fragment corresponding to amino acids 1-248 of human NR6A1(NP_001480) produced in E.coli.
Formulation:	Lyophilized powder (original buffer 1X PBS, pH 7.3, 8% trehalose)
Reconstitution Method:	For reconstitution, we recommend adding 100uL distilled water to a final antibody concentration of about 1 mg/mL. To use this carrier-free antibody for conjugation experiment, we strongly recommend performing another round of desalting process. (OriGene recommends Zeba Spin Desalting Columns, 7KMWCO from Thermo Scientific)
Purification:	Purified from mouse ascites fluids or tissue culture supernatant by affinity chromatography (protein A/G)
Conjugation:	Unconjugated
Storage:	Store at -20°C as received.
Stability:	Stable for 12 months from date of receipt.
Gene Name:	nuclear receptor subfamily 6 group A member 1
Database Link:	<a href="#">NP_001480</a> <a href="#">Entrez Gene 14536 Mouse</a> <a href="#">Entrez Gene 362125 Rat</a> <a href="#">Entrez Gene 2649 Human</a> <a href="#">Q15406</a>



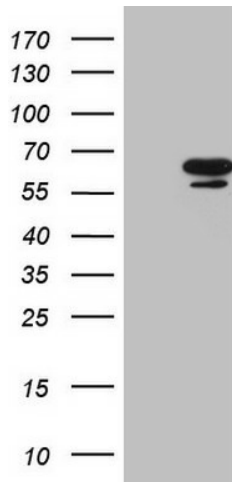
[View online »](#)

**Background:** This gene encodes an orphan nuclear receptor which is a member of the nuclear hormone receptor family. Its expression pattern suggests that it may be involved in neurogenesis and germ cell development. The protein can homodimerize and bind DNA, but in vivo targets have not been identified. Alternate splicing results in multiple transcript variants. [provided by RefSeq, Jun 2013]

**Synonyms:** CT150; GCNF; GCNF1; hGCNF; hRTR; NR61; RTR

**Protein Families:** Druggable Genome, ES Cell Differentiation/IPS, Transcription Factors

**Product images:**



HEK293T cells were transfected with the pCMV6-ENTRY control (Cat# [PS100001], Left lane) or pCMV6-ENTRY NR6A1 (Cat# [RC205484], Right lane) cDNA for 48 hrs and lysed. Equivalent amounts of cell lysates (5 ug per lane) were separated by SDS-PAGE and immunoblotted with anti-NR6A1 (Cat# [TA809501])(1:2000). Positive lysates [LY419899] (100ug) and [LC419899] (20ug) can be purchased separately from OriGene.