

Product datasheet for **CF809475**

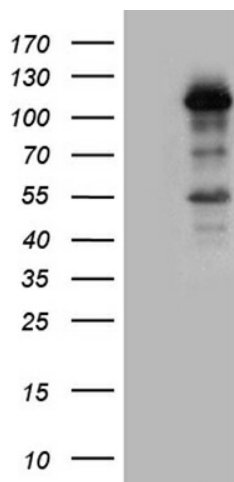
LONRF3 Mouse Monoclonal Antibody [Clone ID: OTI7F7]

Product data:

Product Type:	Primary Antibodies
Clone Name:	OTI7F7
Applications:	WB
Recommended Dilution:	WB 1:500
Reactivity:	Human
Host:	Mouse
Isotype:	IgG1
Clonality:	Monoclonal
Immunogen:	Human recombinant protein fragment corresponding to amino acids 206-456 of human LONRF3 (NP_001027026) produced in E.coli.
Formulation:	Lyophilized powder (original buffer 1X PBS, pH 7.3, 8% trehalose)
Reconstitution Method:	For reconstitution, we recommend adding 100uL distilled water to a final antibody concentration of about 1 mg/mL. To use this carrier-free antibody for conjugation experiment, we strongly recommend performing another round of desalting process. (OriGene recommends Zeba Spin Desalting Columns, 7KMWCO from Thermo Scientific)
Purification:	Purified from mouse ascites fluids or tissue culture supernatant by affinity chromatography (protein A/G)
Conjugation:	Unconjugated
Storage:	Store at -20°C as received.
Stability:	Stable for 12 months from date of receipt.
Predicted Protein Size:	84.3 kDa
Gene Name:	LON peptidase N-terminal domain and ring finger 3
Database Link:	NP_001027026 Entrez Gene 79836 Human Q496Y0
Synonyms:	RNF127
Protein Families:	Druggable Genome, Protease



[View online »](#)

Product images:

HEK293T cells were transfected with the pCMV6-ENTRY control (Cat# [PS100001], Left lane) or pCMV6-ENTRY LONRF3 (Cat# [RC214236], Right lane) cDNA for 48 hrs and lysed. Equivalent amounts of cell lysates (5 ug per lane) were separated by SDS-PAGE and immunoblotted with anti-LONRF3 (Cat# [TA809475])(1:500). Positive lysates [LY400406] (100ug) and [LC400406] (20ug) can be purchased separately from OriGene.