

Product datasheet for **CF809460**

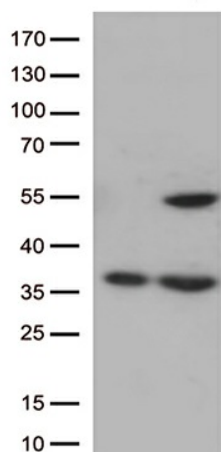
CDK15 Mouse Monoclonal Antibody [Clone ID: OTI2D5]

Product data:

Product Type:	Primary Antibodies
Clone Name:	OTI2D5
Applications:	WB
Recommended Dilution:	WB 1:2000
Reactivity:	Human, Mouse, Rat
Host:	Mouse
Isotype:	IgG2a
Clonality:	Monoclonal
Immunogen:	Full length human recombinant protein of human CDK15 (NP_631897) produced in E.coli.
Formulation:	Lyophilized powder (original buffer 1X PBS, pH 7.3, 8% trehalose)
Reconstitution Method:	For reconstitution, we recommend adding 100uL distilled water to a final antibody concentration of about 1 mg/mL. To use this carrier-free antibody for conjugation experiment, we strongly recommend performing another round of desalting process. (OriGene recommends Zeba Spin Desalting Columns, 7KMWCO from Thermo Scientific)
Purification:	Purified from mouse ascites fluids or tissue culture supernatant by affinity chromatography (protein A/G)
Conjugation:	Unconjugated
Storage:	Store at -20°C as received.
Stability:	Stable for 12 months from date of receipt.
Gene Name:	Homo sapiens cyclin dependent kinase 15 (CDK15), transcript variant 3, mRNA.
Database Link:	NP_631897 Entrez Gene 271697 Mouse Entrez Gene 301440 Rat Entrez Gene 65061 Human Q96Q40
Background:	Serine/threonine-protein kinase involved in the control of the eukaryotic cell cycle, whose activity is controlled by an associated cyclin. [UniProtKB/Swiss-Prot Function]
Synonyms:	ALS2CR7; PFTAIRES2; PFTK2
Protein Families:	Druggable Genome, Protein Kinase



[View online »](#)

Product images:

HEK293T cells were transfected with the pCMV6-ENTRY control (Left lane) or pCMV6-ENTRY CDK15 ([RC219623], Right lane) cDNA for 48 hrs and lysed. Equivalent amounts of cell lysates (5 ug per lane) were separated by SDS-PAGE and immunoblotted with anti-CDK15 (1:500).