

Product datasheet for **CF809457**

FOXO3 Mouse Monoclonal Antibody [Clone ID: OTI6H9]

Product data:

| | |
|------------------------|--|
| Product Type: | Primary Antibodies |
| Clone Name: | OTI6H9 |
| Applications: | WB |
| Recommended Dilution: | WB 1:2000 |
| Reactivity: | Human, Mouse, Rat |
| Host: | Mouse |
| Isotype: | IgG1 |
| Clonality: | Monoclonal |
| Immunogen: | Human recombinant protein fragment corresponding to amino acids 374-673 of human FOXO3(NP_001446) produced in E.coli. |
| Formulation: | Lyophilized powder (original buffer 1X PBS, pH 7.3, 8% trehalose) |
| Reconstitution Method: | For reconstitution, we recommend adding 100uL distilled water to a final antibody concentration of about 1 mg/mL. To use this carrier-free antibody for conjugation experiment, we strongly recommend performing another round of desalting process. (OriGene recommends Zeba Spin Desalting Columns, 7KMWCO from Thermo Scientific) |
| Purification: | Purified from mouse ascites fluids or tissue culture supernatant by affinity chromatography (protein A/G) |
| Conjugation: | Unconjugated |
| Storage: | Store at -20°C as received. |
| Stability: | Stable for 12 months from date of receipt. |
| Gene Name: | forkhead box O3 |
| Database Link: | NP_001446 Entrez Gene 56484 Mouse Entrez Gene 294515 Rat Entrez Gene 2309 Human O43524 |



[View online »](#)

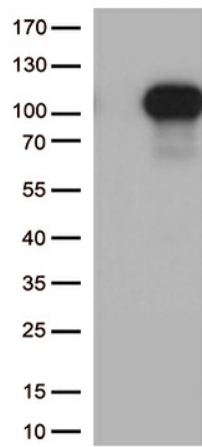
Background: This gene belongs to the forkhead family of transcription factors which are characterized by a distinct forkhead domain. This gene likely functions as a trigger for apoptosis through expression of genes necessary for cell death. Translocation of this gene with the MLL gene is associated with secondary acute leukemia. Alternatively spliced transcript variants encoding the same protein have been observed. [provided by RefSeq, Jul 2008]

Synonyms: AF6q21; FKHL1; FKHL1P2; FOXO2; FOXO3A

Protein Families: Druggable Genome, Transcription Factors

Protein Pathways: Chemokine signaling pathway, Endometrial cancer, Neurotrophin signaling pathway, Non-small cell lung cancer

Product images:



HEK293T cells were transfected with the pCMV6-ENTRY control (Left lane) or pCMV6-ENTRY FOXO3 ([RC202894], Right lane) cDNA for 48 hrs and lysed. Equivalent amounts of cell lysates (5 ug per lane) were separated by SDS-PAGE and immunoblotted with anti-FOXO3 (1:500).