

Product datasheet for **CF809421**

RBPJK (RBPJ) Mouse Monoclonal Antibody [Clone ID: OTI4G10]

Product data:

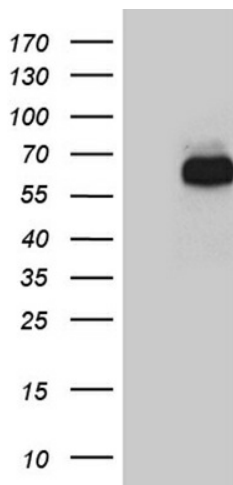
Product Type:	Primary Antibodies
Clone Name:	OTI4G10
Applications:	WB
Recommended Dilution:	WB 1:500
Reactivity:	Human, Mouse, Rat
Host:	Mouse
Isotype:	IgG1
Clonality:	Monoclonal
Immunogen:	Human recombinant protein fragment corresponding to amino acids 1-243 of human RBPJ (NP_005340) produced in E.coli.
Formulation:	Lyophilized powder (original buffer 1X PBS, pH 7.3, 8% trehalose)
Reconstitution Method:	For reconstitution, we recommend adding 100uL distilled water to a final antibody concentration of about 1 mg/mL. To use this carrier-free antibody for conjugation experiment, we strongly recommend performing another round of desalting process. (OriGene recommends Zeba Spin Desalting Columns, 7KMWCO from Thermo Scientific)
Purification:	Purified from mouse ascites fluids or tissue culture supernatant by affinity chromatography (protein A/G)
Conjugation:	Unconjugated
Storage:	Store at -20°C as received.
Stability:	Stable for 12 months from date of receipt.
Predicted Protein Size:	55.5 kDa
Gene Name:	recombination signal binding protein for immunoglobulin kappa J region
Database Link:	NP_005340 Entrez Gene 19664 Mouse Entrez Gene 679028 Rat Entrez Gene 3516 Human Q06330
Synonyms:	AOS3; CBF1; csl; IGKJRB; IGKJRB1; KBF2; RBP-J; RBPJK; RBPSUH; SUH
Protein Families:	Transcription Factors



[View online »](#)

Protein Pathways: Notch signaling pathway

Product images:



HEK293T cells were transfected with the pCMV6-ENTRY control (Left lane) or pCMV6-ENTRY RBPJ ([RC218121], Right lane) cDNA for 48 hrs and lysed. Equivalent amounts of cell lysates (5 ug per lane) were separated by SDS-PAGE and immunoblotted with anti-RBPJ (1:500). Positive lysates [LY401647] (100ug) and [LC401647] (20ug) can be purchased separately from OriGene.