

## Product datasheet for **CF809419**

### UCK2 Mouse Monoclonal Antibody [Clone ID: OTI21A6]

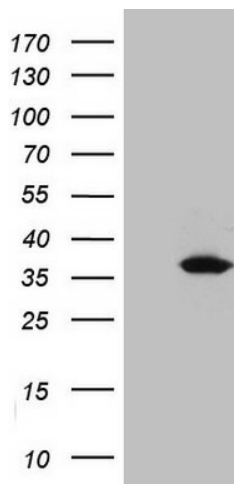
#### Product data:

Product Type:	Primary Antibodies
Clone Name:	OTI21A6
Applications:	WB
Recommended Dilution:	WB 1:500
Reactivity:	Human, Mouse, Rat
Host:	Mouse
Isotype:	IgG2b
Clonality:	Monoclonal
Immunogen:	Synthetic peptide corresponding to residues near C-terminus of human UCK2 (NP_036606).
Formulation:	Lyophilized powder (original buffer 1X PBS, pH 7.3, 8% trehalose)
Reconstitution Method:	For reconstitution, we recommend adding 100uL distilled water to a final antibody concentration of about 1 mg/mL. To use this carrier-free antibody for conjugation experiment, we strongly recommend performing another round of desalting process. (OriGene recommends Zeba Spin Desalting Columns, 7KMWCO from Thermo Scientific)
Purification:	Purified from mouse ascites fluids or tissue culture supernatant by affinity chromatography (protein A/G)
Conjugation:	Unconjugated
Storage:	Store at -20°C as received.
Stability:	Stable for 12 months from date of receipt.
Predicted Protein Size:	29.1 kDa
Gene Name:	uridine-cytidine kinase 2
Database Link:	<a href="#">NP_036606</a> <a href="#">Entrez Gene 7371 Human Q9BZX2</a>
Background:	This gene encodes a pyrimidine ribonucleoside kinase. The encoded protein (EC 2.7.1.48) catalyzes phosphorylation of uridine and cytidine to uridine monophosphate (UMP) and cytidine monophosphate (CMP), respectively. [provided by RefSeq, Oct 2010]



[View online »](#)

**Synonyms:** TSA903; UK; UMPK  
**Protein Families:** Druggable Genome  
**Protein Pathways:** Drug metabolism - other enzymes, Metabolic pathways, Pyrimidine metabolism

**Product images:**

HEK293T cells were transfected with the pCMV6-ENTRY control (Cat# [PS100001], Left lane) or pCMV6-ENTRY UCK2 (Cat# [RC202406], Right lane) cDNA for 48 hrs and lysed. Equivalent amounts of cell lysates (5 ug per lane) were separated by SDS-PAGE and immunoblotted with anti-UCK2 (Cat# [TA809419])(1:500). Positive lysates [LY402221] (100ug) and [LC402221] (20ug) can be purchased separately from OriGene.