

## Product datasheet for **CF809364**

### Cathepsin L (CTSL) Mouse Monoclonal Antibody [Clone ID: OTI6B8]

#### Product data:

|                        |  |
|------------------------|--|
| Product Type:          | Primary Antibodies   |
| Clone Name:            | OTI6B8   |
| Applications:          | IHC, WB  |
| Recommended Dilution:  | WB 1:2000, IHC 1:150   |
| Reactivity:            | Human  |
| Host:                  | Mouse  |
| Isotype:               | IgG1   |
| Clonality:             | Monoclonal   |
| Immunogen:             | Full length human recombinant protein of human CTSL1 (NP_001903) produced in HEK293T cell.   |
| Formulation:           | Lyophilized powder (original buffer 1X PBS, pH 7.3, 8% trehalose)  |
| Reconstitution Method: | For reconstitution, we recommend adding 100uL distilled water to a final antibody concentration of about 1 mg/mL. To use this carrier-free antibody for conjugation experiment, we strongly recommend performing another round of desalting process. (OriGene recommends Zeba Spin Desalting Columns, 7KMWCO from Thermo Scientific) |
| Purification:          | Purified from mouse ascites fluids or tissue culture supernatant by affinity chromatography (protein A/G)  |
| Conjugation:           | Unconjugated   |
| Storage:               | Store at -20°C as received.  |
| Stability:             | Stable for 12 months from date of receipt.   |
| Gene Name:             | cathepsin L  |
| Database Link:         | <a href="#">NP_001903</a><br><a href="#">Entrez Gene 1514 Human</a><br><a href="#">P07711</a>  |

[View online »](#)

**Background:**

The protein encoded by this gene is a lysosomal cysteine proteinase that plays a major role in intracellular protein catabolism. Its substrates include collagen and elastin, as well as alpha-1 protease inhibitor, a major controlling element of neutrophil elastase activity. The encoded protein has been implicated in several pathologic processes, including myofibril necrosis in myopathies and in myocardial ischemia, and in the renal tubular response to proteinuria. This protein, which is a member of the peptidase C1 family, is a dimer composed of disulfide-linked heavy and light chains, both produced from a single protein precursor. Multiple alternatively spliced transcript variants have been found for this gene. [provided by RefSeq, Apr 2012]

**Synonyms:**

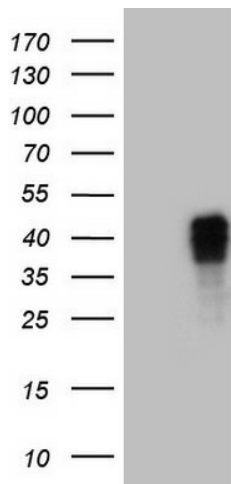
CATL; CTSL1; MEP

**Protein Families:**

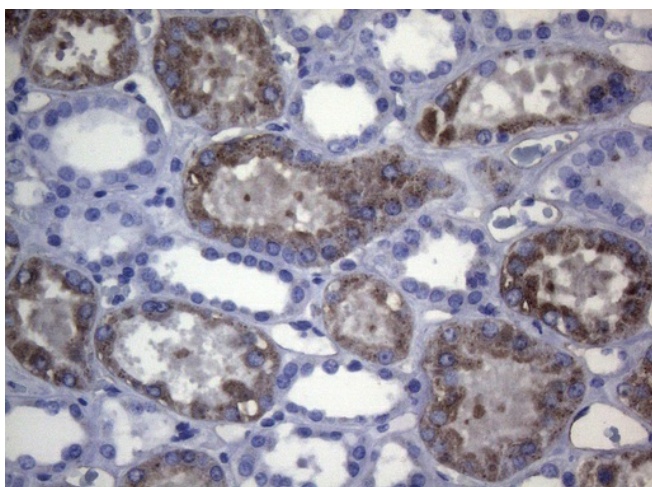
Druggable Genome, Protease

**Protein Pathways:**

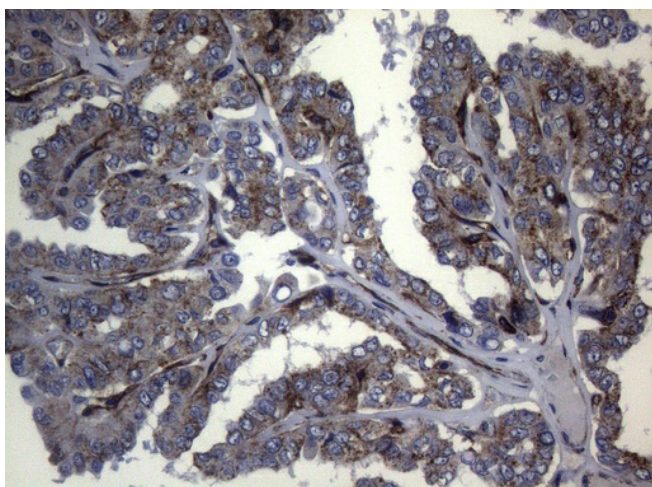
Antigen processing and presentation, Lysosome

**Product images:**


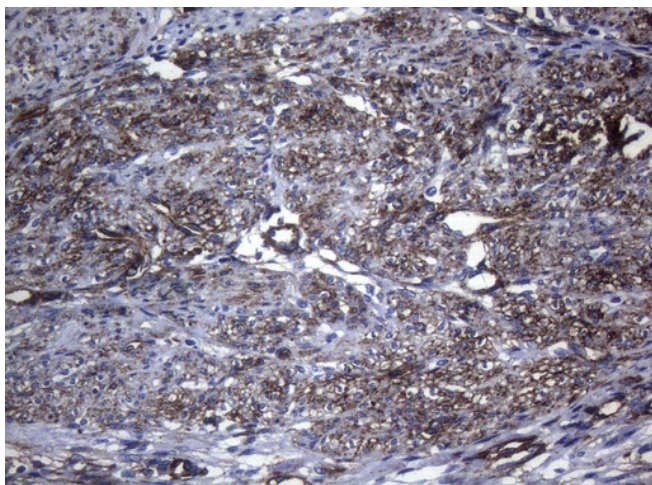
HEK293T cells were transfected with the pCMV6-ENTRY control (Left lane) or pCMV6-ENTRY CTSL1 ([RC203143], Right lane) cDNA for 48 hrs and lysed. Equivalent amounts of cell lysates (5 ug per lane) were separated by SDS-PAGE and immunoblotted with anti-CTSL1 (1:2000). Positive lysates [LY400711] (100ug) and [LC400711] (20ug) can be purchased separately from OriGene.



Immunohistochemical staining of paraffin-embedded Human Kidney tissue within the normal limits using anti-CTSL1 mouse monoclonal antibody. (Heat-induced epitope retrieval by 1mM EDTA in 10mM Tris buffer (pH8.5) at 120°C for 3min, [TA809364]) (1:150)

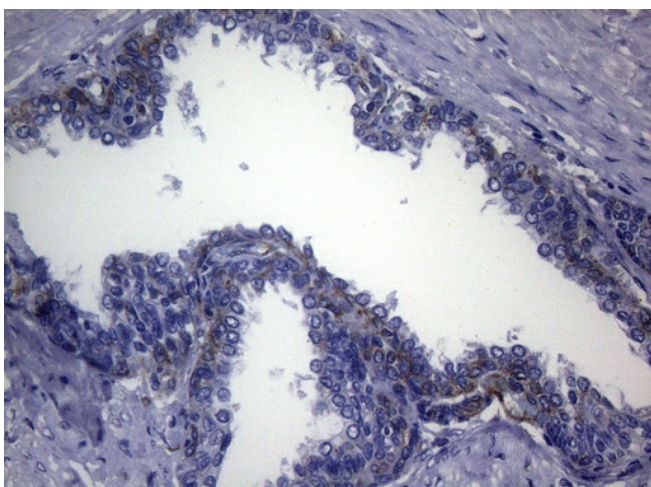


Immunohistochemical staining of paraffin-embedded Carcinoma of Human thyroid tissue using anti-CTSL1 mouse monoclonal antibody. (Heat-induced epitope retrieval by 1mM EDTA in 10mM Tris buffer (pH8.5) at 120°C for 3min, [TA809364]) (1:150)

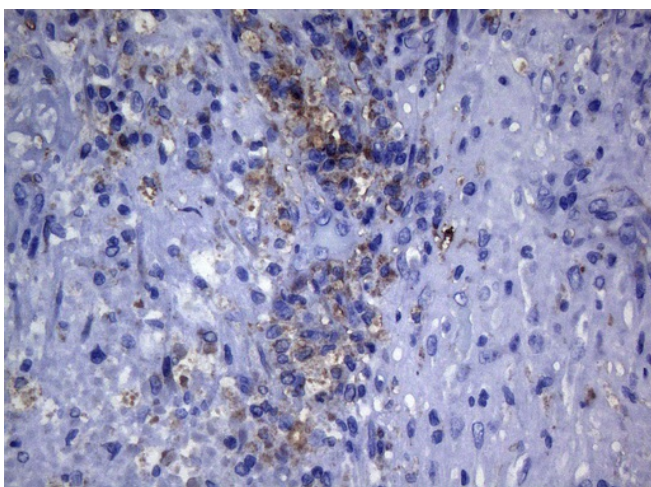


Immunohistochemical staining of paraffin-embedded Human endometrium tissue within the normal limits using anti-CTSL1 mouse monoclonal antibody. (Heat-induced epitope retrieval by 1mM EDTA in 10mM Tris buffer (pH8.5) at 120°C for 3min, [TA809364]) (1:150)

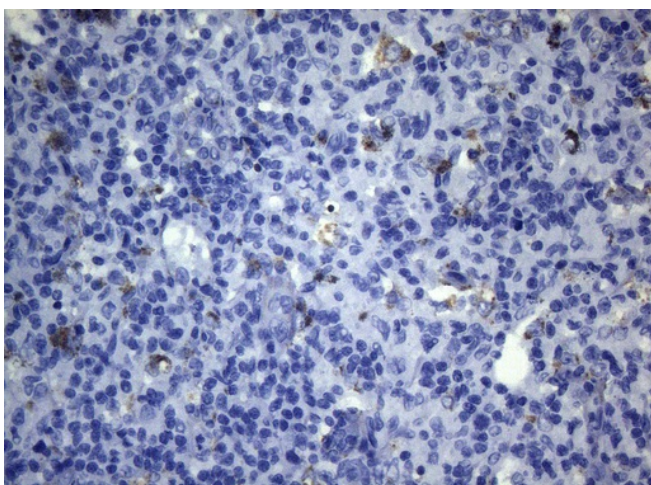




Immunohistochemical staining of paraffin-embedded Human prostate tissue within the normal limits using anti-CTSL1 mouse monoclonal antibody. (Heat-induced epitope retrieval by 1mM EDTA in 10mM Tris buffer (pH8.5) at 120°C for 3min, [TA809364]) (1:150)



Immunohistochemical staining of paraffin-embedded Carcinoma of Human bladder tissue using anti-CTSL1 mouse monoclonal antibody. (Heat-induced epitope retrieval by 1mM EDTA in 10mM Tris buffer (pH8.5) at 120°C for 3min, [TA809364]) (1:150)



Immunohistochemical staining of paraffin-embedded Human lymph node tissue within the normal limits using anti-CTSL1 mouse monoclonal antibody. (Heat-induced epitope retrieval by 1mM EDTA in 10mM Tris buffer (pH8.5) at 120°C for 3min, [TA809364]) (1:150)