

Product datasheet for **CF809354**

PITPNB Mouse Monoclonal Antibody [Clone ID: OTI5D11]

Product data:

| | |
|--------------------------------|--|
| Product Type: | Primary Antibodies |
| Clone Name: | OTI5D11 |
| Applications: | IHC, WB |
| Recommended Dilution: | WB 1:500~2000, IHC 1:2000 |
| Reactivity: | Human, Mouse, Rat |
| Host: | Mouse |
| Isotype: | IgG1 |
| Clonality: | Monoclonal |
| Immunogen: | Full length human recombinant protein of human PITPNB(NP_036531) produced in E.coli. |
| Formulation: | Lyophilized powder (original buffer 1X PBS, pH 7.3, 8% trehalose) |
| Reconstitution Method: | For reconstitution, we recommend adding 100uL distilled water to a final antibody concentration of about 1 mg/mL. To use this carrier-free antibody for conjugation experiment, we strongly recommend performing another round of desalting process. (OriGene recommends Zeba Spin Desalting Columns, 7KMWCO from Thermo Scientific) |
| Purification: | Purified from mouse ascites fluids or tissue culture supernatant by affinity chromatography (protein A/G) |
| Conjugation: | Unconjugated |
| Storage: | Store at -20°C as received. |
| Stability: | Stable for 12 months from date of receipt. |
| Predicted Protein Size: | 31.4 kDa |
| Gene Name: | phosphatidylinositol transfer protein beta |
| Database Link: | NP_036531 Entrez Gene 56305 MouseEntrez Gene 114561 RatEntrez Gene 23760 Human P48739 |



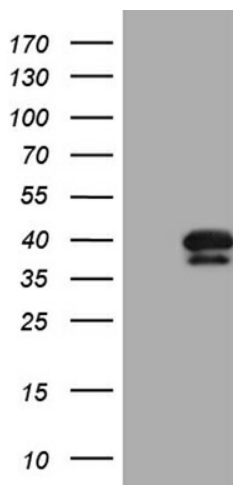
[View online »](#)

Background:

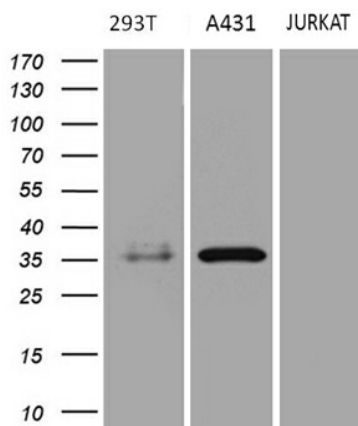
This gene encodes a cytoplasmic protein that catalyzes the transfer of phosphatidylinositol and phosphatidylcholine between membranes. This transfer activity is required for COPI complex-mediated retrograde transport from the Golgi apparatus to the endoplasmic reticulum. Alternative splicing of this gene results in multiple transcript variants. [provided by RefSeq, Sep 2013]

Synonyms:

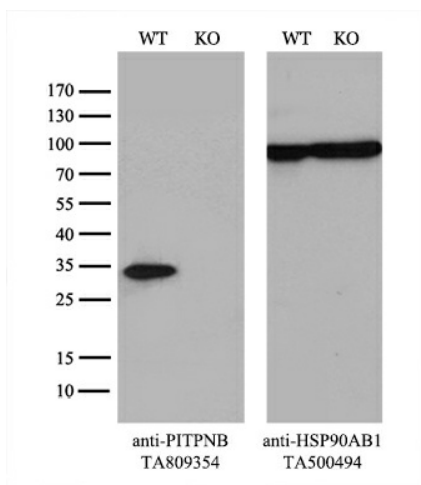
PI-TP-beta; PtdInsTP; VIB1B

Product images:


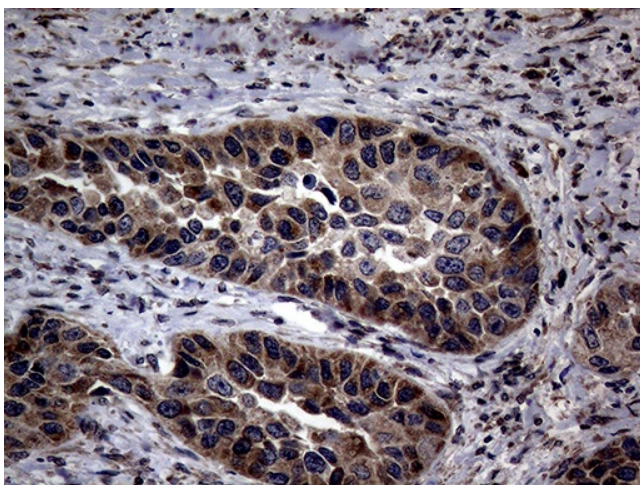
HEK293T cells were transfected with the pCMV6-ENTRY control (Left lane) or pCMV6-ENTRY PITPNB ([RC204262], Right lane) cDNA for 48 hrs and lysed. Equivalent amounts of cell lysates (5 ug per lane) were separated by SDS-PAGE and immunoblotted with anti-PITPNB (1:2000). Positive lysates [LY415778] (100ug) and [LC415778] (20ug) can be purchased separately from OriGene.



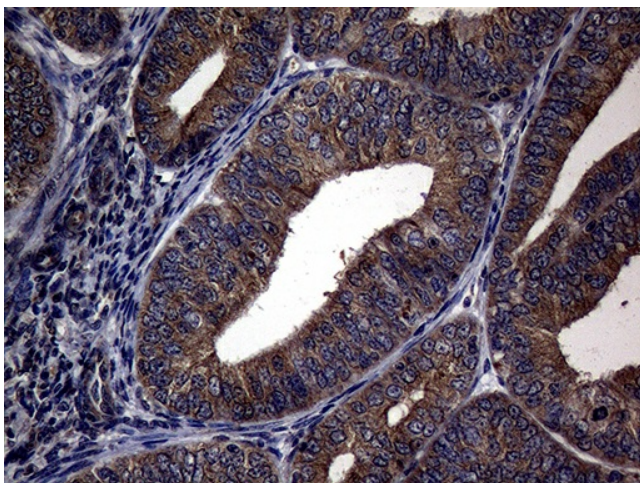
Western blot analysis of extracts (35ug) from 3 different cell lines by using anti-PITPNB monoclonal antibody (A431: human; 293T: human; Jurkat: human) (1:500).



Equivalent amounts of cell lysates (10 ug per lane) of wild-type Hela cells (WT, Cat# LC810HELA) and PITPNB-Knockout Hela cells (KO, Cat# [LC810341]) were separated by SDS-PAGE and immunoblotted with anti-PITPNB monoclonal antibody [TA809354], (1:500). Then the blotted membrane was stripped and reprobed with anti-HSP90AB1 antibody ([TA500494]) as a loading control.



Immunohistochemical staining of paraffin-embedded Carcinoma of Human kidney tissue using anti-PITPNB mouse monoclonal antibody. Heat-induced epitope retrieval by EDTA solution buffer pH 8.0 at 120°C for 3 min.



Immunohistochemical staining of paraffin-embedded Adenocarcinoma of Human endometrium tissue using anti-PITPNB mouse monoclonal antibody. Heat-induced epitope retrieval by EDTA solution buffer pH 8.0 at 120°C for 3 min.