

## Product datasheet for **CF809320**

### GEF H1 (ARHGEF2) Mouse Monoclonal Antibody [Clone ID: OTI5F2]

#### Product data:

Product Type:	Primary Antibodies
Clone Name:	OTI5F2
Applications:	FC, WB
Recommended Dilution:	WB 1:2000
Reactivity:	Human, Mouse, Rat
Host:	Mouse
Isotype:	IgG1
Clonality:	Monoclonal
Immunogen:	Full length human recombinant protein of human ARHGEF2 (NP_004714) produced in HEK293T cell.
Formulation:	Lyophilized powder (original buffer 1X PBS, pH 7.3, 8% trehalose)
Reconstitution Method:	For reconstitution, we recommend adding 100uL distilled water to a final antibody concentration of about 1 mg/mL. To use this carrier-free antibody for conjugation experiment, we strongly recommend performing another round of desalting process. (OriGene recommends Zeba Spin Desalting Columns, 7KMWCO from Thermo Scientific)
Purification:	Purified from mouse ascites fluids or tissue culture supernatant by affinity chromatography (protein A/G)
Conjugation:	Unconjugated
Storage:	Store at -20°C as received.
Stability:	Stable for 12 months from date of receipt.
Predicted Protein Size:	108.1 kDa
Gene Name:	Rho/Rac guanine nucleotide exchange factor 2
Database Link:	<a href="#">NP_004714</a> <a href="#">Entrez Gene 16800 Mouse</a> <a href="#">Entrez Gene 310635 Rat</a> <a href="#">Entrez Gene 9181 Human</a> <a href="#">Q92974</a>



[View online »](#)

**Background:**

Rho GTPases play a fundamental role in numerous cellular processes that are initiated by extracellular stimuli that work through G protein coupled receptors. The encoded protein may form complex with G proteins and stimulate rho-dependent signals. Alternatively spliced transcript variants encoding different isoforms have been identified. [provided by RefSeq, Jun 2009]

**Synonyms:**

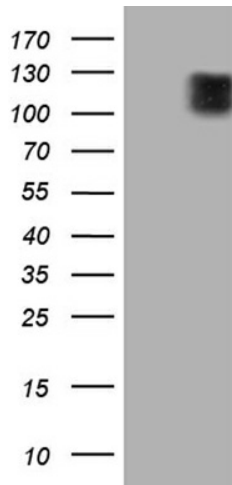
GEF; GEF-H1; GEFH1; LFP40; P40

**Protein Families:**

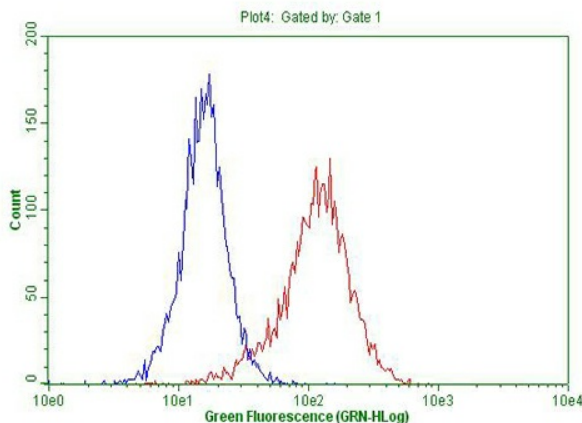
Druggable Genome

**Protein Pathways:**

Pathogenic Escherichia coli infection

**Product images:**


HEK293T cells were transfected with the pCMV6-ENTRY control (Cat# [PS100001], Left lane) or pCMV6-ENTRY ARHGEF2 (Cat# [RC204546], Right lane) cDNA for 48 hrs and lysed. Equivalent amounts of cell lysates (5 ug per lane) were separated by SDS-PAGE and immunoblotted with anti-ARHGEF2 (Cat# [TA809320])(1:2000). Positive lysates [LY417793] (100ug) and [LC417793] (20ug) can be purchased separately from OriGene.



Flow cytometric Analysis of permeabilized HeLa cells, using anti-ARHGEF2 antibody ([TA809320]), (Red), compared to negative control (PBS), (Blue) (1:100).