

## Product datasheet for **CF809281**

### **BNIPL Mouse Monoclonal Antibody [Clone ID: OTI8F6]**

#### **Product data:**

|                         |  |
|-------------------------|--|
| Product Type:           | Primary Antibodies   |
| Clone Name:             | OTI8F6   |
| Applications:           | WB   |
| Recommended Dilution:   | WB 1:500~2000  |
| Reactivity:             | Human, Mouse, Rat  |
| Host:                   | Mouse  |
| Isotype:                | IgG1   |
| Clonality:              | Monoclonal   |
| Immunogen:              | Human recombinant protein fragment corresponding to amino acids 1-203 of human BNIPL(NP_612122) produced in E.coli.  |
| Formulation:            | Lyophilized powder (original buffer 1X PBS, pH 7.3, 8% trehalose)  |
| Reconstitution Method:  | For reconstitution, we recommend adding 100uL distilled water to a final antibody concentration of about 1 mg/mL. To use this carrier-free antibody for conjugation experiment, we strongly recommend performing another round of desalting process. (OriGene recommends Zeba Spin Desalting Columns, 7KMWCO from Thermo Scientific) |
| Purification:           | Purified from mouse ascites fluids or tissue culture supernatant by affinity chromatography (protein A/G)  |
| Conjugation:            | Unconjugated   |
| Storage:                | Store at -20°C as received.  |
| Stability:              | Stable for 12 months from date of receipt.   |
| Predicted Protein Size: | 39.5 kDa   |
| Gene Name:              | BCL2 interacting protein like  |
| Database Link:          | <a href="#">NP_612122</a><br><a href="#">Entrez Gene 171388 Mouse</a> <a href="#">Entrez Gene 361994 Rat</a> <a href="#">Entrez Gene 149428 Human</a><br><a href="#">Q7Z465</a>  |

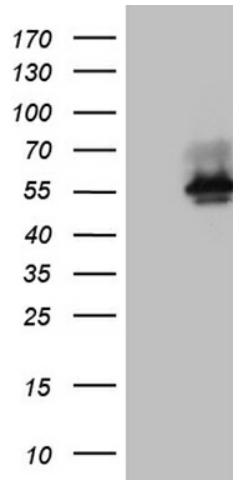


[View online »](#)

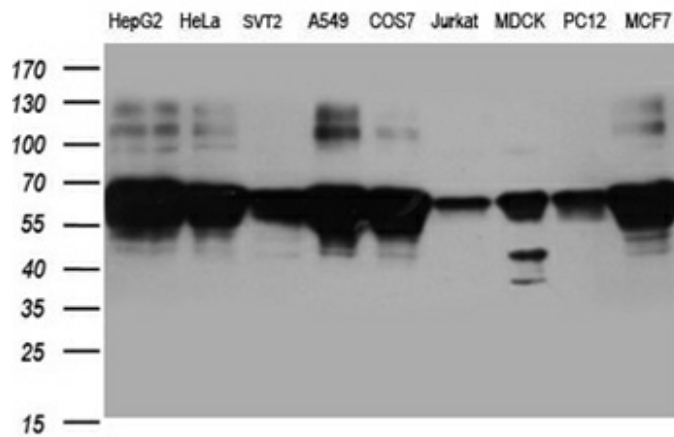
**Background:** The protein encoded by this gene interacts with several other proteins, such as BCL2, ARHGAP1, MIF and GFER. It may function as a bridge molecule between BCL2 and ARHGAP1/CDC42 in promoting cell death. Alternatively spliced transcript variants encoding different isoforms have been described for this gene. [provided by RefSeq, Aug 2011]

**Synonyms:** BNIP-S; BNIP-Salpha; BNIP-Sbeta; BNIP-L-1; BNIP-L-2; BNIP-L1; BNIP-L2; BNIPS; PP753

**Product images:**



HEK293T cells were transfected with the pCMV6-ENTRY control (Cat# [PS100001], Left lane) or pCMV6-ENTRY BNIP-L2 (Cat# [RC206811], Right lane) cDNA for 48 hrs and lysed. Equivalent amounts of cell lysates (5 ug per lane) were separated by SDS-PAGE and immunoblotted with anti-BNIP-L2 (Cat# [TA809281])(1:2000). Positive lysates [LY408738] (100ug) and [LC408738] (20ug) can be purchased separately from OriGene.



Western blot analysis of extracts (35ug) from 9 different cell lines by using anti-BNIP-L2 monoclonal antibody (1:500).