

Product datasheet for **CF809252**

FCRLB Mouse Monoclonal Antibody [Clone ID: OTI1D7]

Product data:

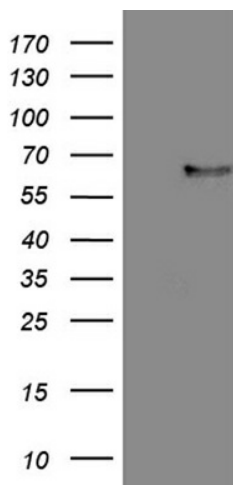
Product Type:	Primary Antibodies
Clone Name:	OTI1D7
Applications:	WB
Recommended Dilution:	WB 1:2000
Reactivity:	Human, Rat
Host:	Mouse
Isotype:	IgG1
Clonality:	Monoclonal
Immunogen:	Human recombinant protein fragment corresponding to amino acids 202-426 of human FCRLB(NP_001002901) produced in E.coli.
Formulation:	Lyophilized powder (original buffer 1X PBS, pH 7.3, 8% trehalose)
Reconstitution Method:	For reconstitution, we recommend adding 100uL distilled water to a final antibody concentration of about 1 mg/mL. To use this carrier-free antibody for conjugation experiment, we strongly recommend performing another round of desalting process. (OriGene recommends Zeba Spin Desalting Columns, 7KMWCO from Thermo Scientific)
Purification:	Purified from mouse ascites fluids or tissue culture supernatant by affinity chromatography (protein A/G)
Conjugation:	Unconjugated
Storage:	Store at -20°C as received.
Stability:	Stable for 12 months from date of receipt.
Gene Name:	Fc receptor like B
Database Link:	NP_001002901 Entrez Gene 127943 Human Q6BAA4
Background:	FCRL2 belongs to the Fc receptor family. Fc receptors are involved in phagocytosis, antibody-dependent cell cytotoxicity, immediate hypersensitivity, and transcytosis of immunoglobulins via their ability to bind immunoglobulin (Ig) constant regions (Chikaev et al., 2005 [PubMed 15676285]). [supplied by OMIM, Mar 2008]



[View online »](#)

Synonyms: FCRL2; FCRLM2; FCRLY; FcRY; FRET-2

Product images:



HEK293T cells were transfected with the pCMV6-ENTRY control (Left lane) or pCMV6-ENTRY FCRLB ([RC217211], Right lane) cDNA for 48 hrs and lysed. Equivalent amounts of cell lysates (5 ug per lane) were separated by SDS-PAGE and immunoblotted with anti-FCRLB (1:2000). Positive lysates [LY400392] (100ug) and [LC400392] (20ug) can be purchased separately from OriGene.