

Product datasheet for **CF809240**

BNIPL Mouse Monoclonal Antibody [Clone ID: OTI2E8]

Product data:

Product Type:	Primary Antibodies
Clone Name:	OTI2E8
Applications:	WB
Recommended Dilution:	WB 1:500~2000
Reactivity:	Human, Mouse, Rat
Host:	Mouse
Isotype:	IgG1
Clonality:	Monoclonal
Immunogen:	Human recombinant protein fragment corresponding to amino acids 1-203 of human BNIPL(NP_612122) produced in E.coli.
Formulation:	Lyophilized powder (original buffer 1X PBS, pH 7.3, 8% trehalose)
Reconstitution Method:	For reconstitution, we recommend adding 100uL distilled water to a final antibody concentration of about 1 mg/mL. To use this carrier-free antibody for conjugation experiment, we strongly recommend performing another round of desalting process. (OriGene recommends Zeba Spin Desalting Columns, 7KMWCO from Thermo Scientific)
Purification:	Purified from mouse ascites fluids or tissue culture supernatant by affinity chromatography (protein A/G)
Conjugation:	Unconjugated
Storage:	Store at -20°C as received.
Stability:	Stable for 12 months from date of receipt.
Predicted Protein Size:	39.5 kDa
Gene Name:	BCL2 interacting protein like
Database Link:	NP_612122 Entrez Gene 171388 Mouse Entrez Gene 361994 Rat Entrez Gene 149428 Human Q7Z465

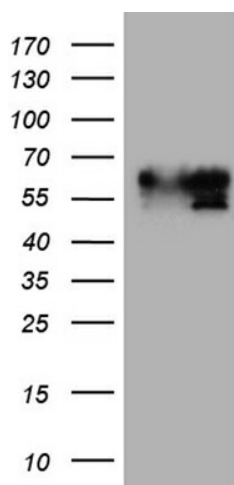


[View online »](#)

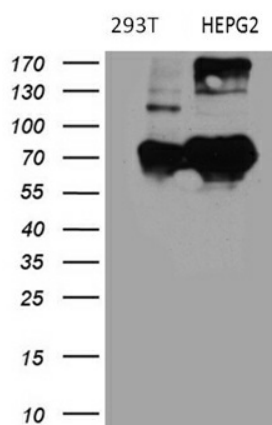
Background: The protein encoded by this gene interacts with several other proteins, such as BCL2, ARHGAP1, MIF and GFER. It may function as a bridge molecule between BCL2 and ARHGAP1/CDC42 in promoting cell death. Alternatively spliced transcript variants encoding different isoforms have been described for this gene. [provided by RefSeq, Aug 2011]

Synonyms: BNIP-S; BNIP-Salpha; BNIP-Sbeta; BNIPL-1; BNIPL-2; BNIPL1; BNIPL2; BNIPS; PP753

Product images:



HEK293T cells were transfected with the pCMV6-ENTRY control (Left lane) or pCMV6-ENTRY BNIPL ([RC206811], Right lane) cDNA for 48 hrs and lysed. Equivalent amounts of cell lysates (5 ug per lane) were separated by SDS-PAGE and immunoblotted with anti-BNIPL (1:2000). Positive lysates [LY408738] (100ug) and [LC408738] (20ug) can be purchased separately from OriGene.



Western blot analysis of extracts (35ug) from 2 different cell lines by using anti-BNIPL monoclonal antibody (HepG2: human; 293T: human) (1:500).