

Product datasheet for CF809202

Estrogen Related Receptor alpha (ESRR) Mouse Monoclonal Antibody [Clone ID: OTI3G3]

Product data:

Product Type:	Primary Antibodies
Clone Name:	OTI3G3
Applications:	WB
Recommended Dilution:	WB 1:500~2000
Reactivity:	Human
Host:	Mouse
Isotype:	IgG2a
Clonality:	Monoclonal
Immunogen:	Human recombinant protein fragment corresponding to amino acids 206-417 of human ESRR (NP_004442) produced in E.coli.
Formulation:	Lyophilized powder (original buffer 1X PBS, pH 7.3, 8% trehalose)
Reconstitution Method:	For reconstitution, we recommend adding 100uL distilled water to a final antibody concentration of about 1 mg/mL. To use this carrier-free antibody for conjugation experiment, we strongly recommend performing another round of desalting process. (OriGene recommends Zeba Spin Desalting Columns, 7KMWCO from Thermo Scientific)
Purification:	Purified from mouse ascites fluids or tissue culture supernatant by affinity chromatography (protein A/G)
Conjugation:	Unconjugated
Storage:	Store at -20°C as received.
Stability:	Stable for 12 months from date of receipt.
Predicted Protein Size:	46 kDa
Gene Name:	estrogen related receptor alpha
Database Link:	NP_004442 Entrez Gene 2101 Human P11474



[View online »](#)

Background:

The protein encoded by this gene is a nuclear receptor that is closely related to the estrogen receptor. This protein acts as a site-specific transcription regulator and has been also shown to interact with estrogen and the transcription factor TFIIB by direct protein-protein contact. The binding and regulatory activities of this protein have been demonstrated in the regulation of a variety of genes including lactoferrin, osteopontin, medium-chain acyl coenzyme A dehydrogenase (MCAD) and thyroid hormone receptor genes. A processed pseudogene of ESRRA is located on chromosome 13q12.1. Alternatively spliced transcript variants have been found for this gene. [provided by RefSeq, Sep 2013]

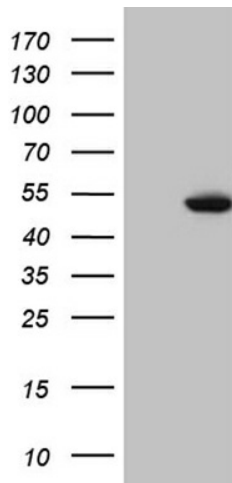
Synonyms:

ERR1; ERRa; ERRalpha; ESRL1; NR3B1

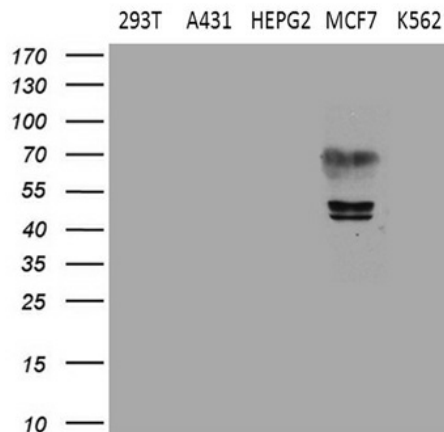
Protein Families:

Druggable Genome, Nuclear Hormone Receptor, Transcription Factors

Product images:



HEK293T cells were transfected with the pCMV6-ENTRY control (Left lane) or pCMV6-ENTRY ESRRA ([RC209028], Right lane) cDNA for 48 hrs and lysed. Equivalent amounts of cell lysates (5 ug per lane) were separated by SDS-PAGE and immunoblotted with anti-ESRRA (1:2000). Positive lysates [LY417978] (100ug) and [LC417978] (20ug) can be purchased separately from OriGene.



Western blot analysis of extracts (35ug) from 5 different cell lines by using anti-ESRRA monoclonal antibody (1:500).