

Product datasheet for **CF809186**

Transglutaminase 2 (TGM2) Mouse Monoclonal Antibody [Clone ID: OTI1C4]

Product data:

Product Type:	Primary Antibodies
Clone Name:	OTI1C4
Applications:	IHC, WB
Recommended Dilution:	WB 1:500, IHC 1:500
Reactivity:	Human
Host:	Mouse
Isotype:	IgG1
Clonality:	Monoclonal
Immunogen:	Full length human recombinant protein of human TGM2 (NP_004604) produced in HEK293T cell.
Formulation:	Lyophilized powder (original buffer 1X PBS, pH 7.3, 8% trehalose)
Reconstitution Method:	For reconstitution, we recommend adding 100uL distilled water to a final antibody concentration of about 1 mg/mL. To use this carrier-free antibody for conjugation experiment, we strongly recommend performing another round of desalting process. (OriGene recommends Zeba Spin Desalting Columns, 7KMWCO from Thermo Scientific)
Purification:	Purified from mouse ascites fluids or tissue culture supernatant by affinity chromatography (protein A/G)
Conjugation:	Unconjugated
Storage:	Store at -20°C as received.
Stability:	Stable for 12 months from date of receipt.
Predicted Protein Size:	77.1 kDa
Gene Name:	transglutaminase 2
Database Link:	NP_004604 Entrez Gene 7052 Human P21980



[View online »](#)

Background:

Transglutaminases are enzymes that catalyze the crosslinking of proteins by epsilon-gamma glutamyl lysine isopeptide bonds. While the primary structure of transglutaminases is not conserved, they all have the same amino acid sequence at their active sites and their activity is calcium-dependent. The protein encoded by this gene acts as a monomer, is induced by retinoic acid, and appears to be involved in apoptosis. Finally, the encoded protein is the autoantigen implicated in celiac disease. Two transcript variants encoding different isoforms have been found for this gene. [provided by RefSeq, Jul 2008]

Synonyms:

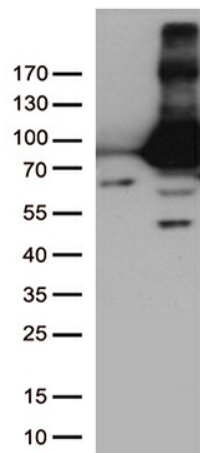
G-ALPHA-h; GNAH; HEL-S-45; TG2; TGC

Protein Families:

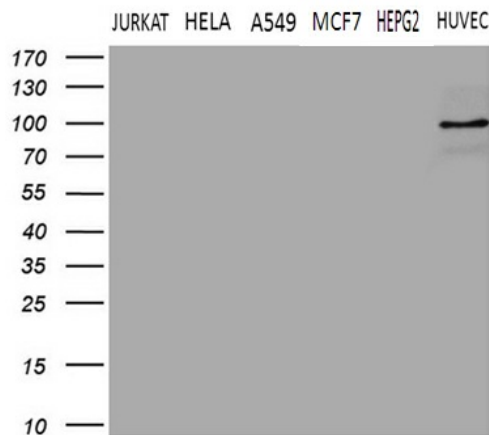
Druggable Genome

Protein Pathways:

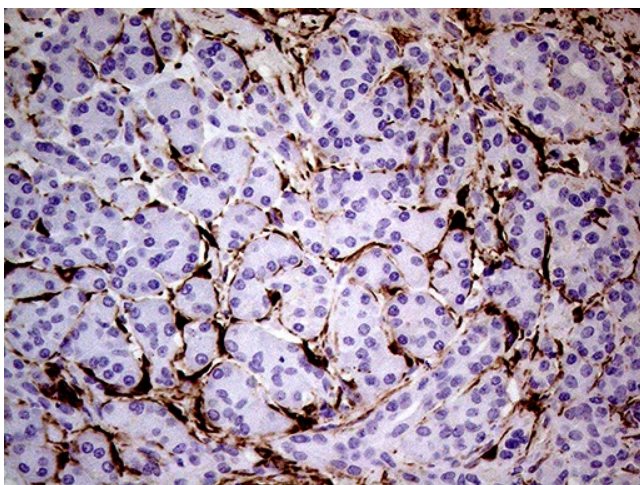
Huntington's disease

Product images:


HEK293T cells were transfected with the pCMV6-ENTRY control (Left lane) or pCMV6-ENTRY TGM2 ([RC217353], Right lane) cDNA for 48 hrs and lysed. Equivalent amounts of cell lysates (5 ug per lane) were separated by SDS-PAGE and immunoblotted with anti-TGM2. Positive lysates [LY401458] (100ug) and [LC401458] (20ug) can be purchased separately from OriGene.



Western blot analysis of extracts (35ug) from 6 different cell lines by using anti-TGM2 monoclonal antibody (1:500).



Immunohistochemical staining of paraffin-embedded Human pancreas tissue within the normal limits using anti-TGM2 mouse monoclonal antibody. (Heat-induced epitope retrieval by 1mM EDTA in 10mM Tris buffer (pH8.5) at 120°C for 3min, [TA809186]) (1:500)