

## Product datasheet for **CF809168**

### ASS1 Mouse Monoclonal Antibody [Clone ID: OTI3D1]

#### Product data:

Product Type:	Primary Antibodies
Clone Name:	OTI3D1
Applications:	IHC, WB
Recommended Dilution:	WB 1:500~2000, IHC 1:500
Reactivity:	Human, Mouse, Rat
Host:	Mouse
Isotype:	IgG1
Clonality:	Monoclonal
Immunogen:	Synthetic peptide corresponding to residues near C-terminus of human ASS1 (NP_000041).
Formulation:	Lyophilized powder (original buffer 1X PBS, pH 7.3, 8% trehalose)
Reconstitution Method:	For reconstitution, we recommend adding 100uL distilled water to a final antibody concentration of about 1 mg/mL. To use this carrier-free antibody for conjugation experiment, we strongly recommend performing another round of desalting process. (OriGene recommends Zeba Spin Desalting Columns, 7KMWCO from Thermo Scientific)
Purification:	Purified from mouse ascites fluids or tissue culture supernatant by affinity chromatography (protein A/G)
Conjugation:	Unconjugated
Storage:	Store at -20°C as received.
Stability:	Stable for 12 months from date of receipt.
Predicted Protein Size:	46.3 kDa
Gene Name:	argininosuccinate synthase 1
Database Link:	<a href="#">NP_000041</a> <a href="#">Entrez Gene 11898 Mouse</a> <a href="#">Entrez Gene 25698 Rat</a> <a href="#">Entrez Gene 445 Human</a> <a href="#">P00966</a>



[View online »](#)

**Background:**

The protein encoded by this gene catalyzes the penultimate step of the arginine biosynthetic pathway. There are approximately 10 to 14 copies of this gene including the pseudogenes scattered across the human genome, among which the one located on chromosome 9 appears to be the only functional gene for argininosuccinate synthetase. Mutations in the chromosome 9 copy of this gene cause citrullinemia. Two transcript variants encoding the same protein have been found for this gene. [provided by RefSeq, Aug 2012]

**Synonyms:**

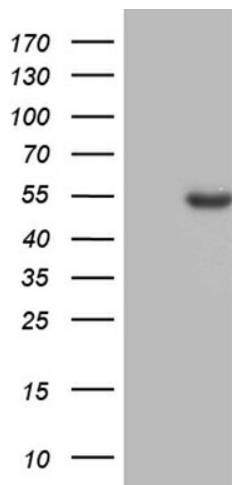
ASS; CTLN1

**Protein Families:**

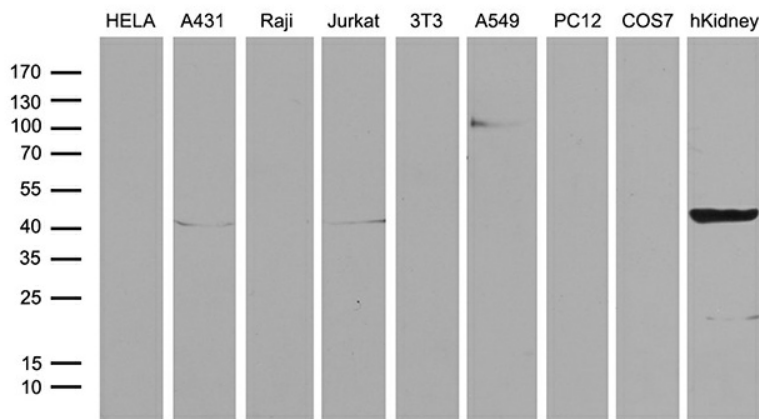
Druggable Genome

**Protein Pathways:**

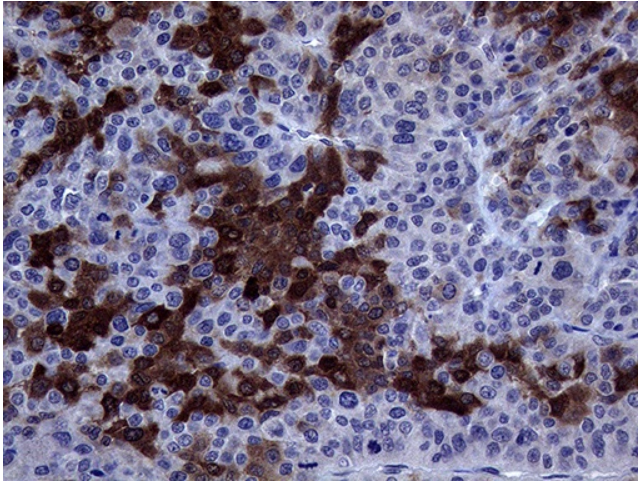
Alanine, aspartate and glutamate metabolism, Arginine and proline metabolism, Metabolic pathways

**Product images:**


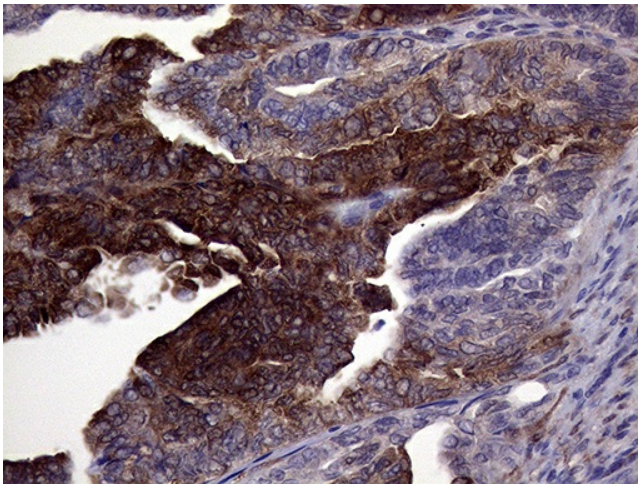
HEK293T cells were transfected with the pCMV6-ENTRY control (Left lane) or pCMV6-ENTRY ASS1 ([RC223189], Right lane) cDNA for 48 hrs and lysed. Equivalent amounts of cell lysates (5 ug per lane) were separated by SDS-PAGE and immunoblotted with anti-ASS1 (1:2000). Positive lysates [LY424955] (100ug) and [LC424955] (20ug) can be purchased separately from OriGene.



Western blot analysis of extracts (35ug) from 8 different cell lines and human kidney tissue lysate by using anti-ASS1 monoclonal antibody (1:500).



Immunohistochemical staining of paraffin-embedded Carcinoma of Human liver tissue using anti-ASS1 mouse monoclonal antibody. Heat-induced epitope retrieval by EDTA solution buffer pH 8.0 at 120°C for 3 min.



Immunohistochemical staining of paraffin-embedded Adenocarcinoma of Human endometrium tissue using anti-ASS1 mouse monoclonal antibody. Heat-induced epitope retrieval by EDTA solution buffer pH 8.0 at 120°C for 3 min.