

## Product datasheet for **CF809143**

### **GATA3 Mouse Monoclonal Antibody [Clone ID: OTI4D5]**

#### **Product data:**

<b>Product Type:</b>	Primary Antibodies
<b>Clone Name:</b>	OTI4D5
<b>Applications:</b>	FC, IF, WB
<b>Recommended Dilution:</b>	WB 1:2000
<b>Reactivity:</b>	Human, Mouse, Rat
<b>Host:</b>	Mouse
<b>Isotype:</b>	IgG2b
<b>Clonality:</b>	Monoclonal
<b>Immunogen:</b>	Human recombinant protein fragment corresponding to amino acids 155-443 of human GATA3 (NP_001002295) produced in E.coli.
<b>Formulation:</b>	Lyophilized powder (original buffer 1X PBS, pH 7.3, 8% trehalose)
<b>Reconstitution Method:</b>	For reconstitution, we recommend adding 100uL distilled water to a final antibody concentration of about 1 mg/mL. To use this carrier-free antibody for conjugation experiment, we strongly recommend performing another round of desalting process. (OriGene recommends Zeba Spin Desalting Columns, 7KMWCO from Thermo Scientific)
<b>Purification:</b>	Purified from mouse ascites fluids or tissue culture supernatant by affinity chromatography (protein A/G)
<b>Conjugation:</b>	Unconjugated
<b>Storage:</b>	Store at -20°C as received.
<b>Stability:</b>	Stable for 12 months from date of receipt.
<b>Predicted Protein Size:</b>	47.9 kDa
<b>Gene Name:</b>	GATA binding protein 3
<b>Database Link:</b>	<a href="#">NP_001002295</a> <a href="#">Entrez Gene 14462 Mouse</a> <a href="#">Entrez Gene 85471 Rat</a> <a href="#">Entrez Gene 2625 Human</a> <a href="#">P23771</a>



[View online »](#)

**Background:**

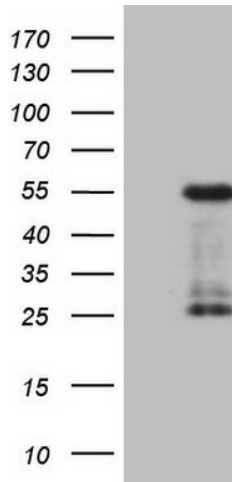
This gene encodes a protein which belongs to the GATA family of transcription factors. The protein contains two GATA-type zinc fingers and is an important regulator of T-cell development and plays an important role in endothelial cell biology. Defects in this gene are the cause of hypoparathyroidism with sensorineural deafness and renal dysplasia. [provided by RefSeq, Nov 2009]

**Synonyms:**

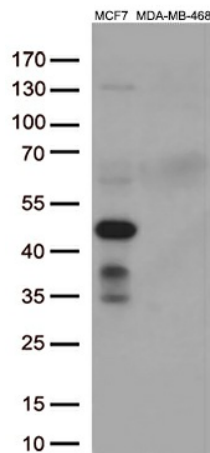
HDR; HDRS

**Protein Families:**

Adult stem cells, ES Cell Differentiation/IPS, Stem cell relevant signaling - JAK/STAT signaling pathway, Transcription Factors

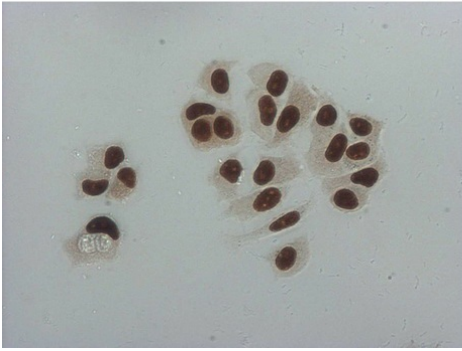
**Product images:**


HEK293T cells were transfected with the pCMV6-ENTRY control (Left lane) or pCMV6-ENTRY GATA3 ([RC211904], Right lane) cDNA for 48 hrs and lysed. Equivalent amounts of cell lysates (5 ug per lane) were separated by SDS-PAGE and immunoblotted with anti-GATA3 (1:2000). Positive lysates [LY424146] (100ug) and [LC424146] (20ug) can be purchased separately from OriGene.



Western blot analysis of extracts (35ug) from 2 different cell by using anti-GATA3 monoclonal antibody (1:500).

**MCF7**

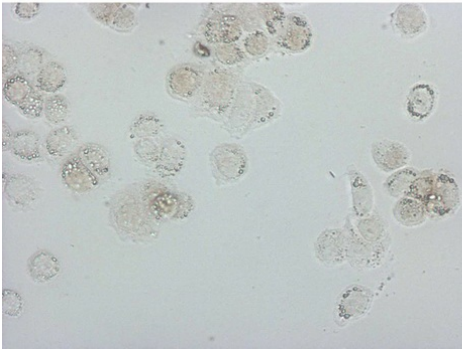


**HUVEC**



Immunocytochemistry staining of MCF-7 cells using anti-GATA3 mouse monoclonal antibody ([TA809143]) (Left). The right is negative control (1:10000).

**MDA-MB-468**

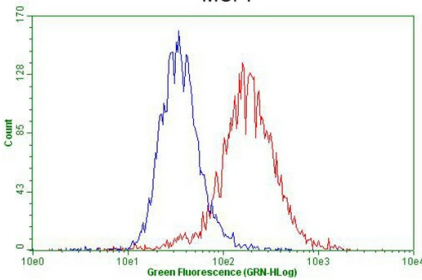


**HUVEC**

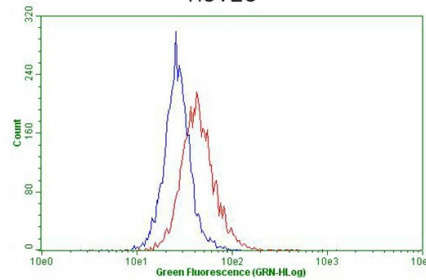


Immunocytochemistry staining of MDA-MB-468 cells using anti-GATA3 mouse monoclonal antibody ([TA809143]) (Left). The right is negative control (1:10000).

**MCF7**



**HUVEC**



Flow cytometric Analysis of penetrated MCF-7 cells, using anti-GATA3 antibody ([TA809143]), (Red), compared to a nonspecific negative control antibody, (Blue). The right is HUVEC cells as negative control (1:100).