

## Product datasheet for **CF808982**

### PD L2 (PDCD1LG2) Mouse Monoclonal Antibody [Clone ID: OTI12C7]

#### Product data:

Product Type:	Primary Antibodies
Clone Name:	OTI12C7
Applications:	FC, IHC
Recommended Dilution:	IHC 1:150
Reactivity:	Human
Host:	Mouse
Isotype:	IgG1
Clonality:	Monoclonal
Immunogen:	Full length human recombinant protein of human PDCD1LG2 (NP_079515) produced in HEK293T cell.
Formulation:	Lyophilized powder (original buffer 1X PBS, pH 7.3, 8% trehalose)
Reconstitution Method:	For reconstitution, we recommend adding 100uL distilled water to a final antibody concentration of about 1 mg/mL. To use this carrier-free antibody for conjugation experiment, we strongly recommend performing another round of desalting process. (OriGene recommends Zeba Spin Desalting Columns, 7KMWCO from Thermo Scientific)
Purification:	Purified from mouse ascites fluids or tissue culture supernatant by affinity chromatography (protein A/G)
Conjugation:	Unconjugated
Storage:	Store at -20°C as received.
Stability:	Stable for 12 months from date of receipt.
Gene Name:	programmed cell death 1 ligand 2
Database Link:	<a href="#">NP_079515</a> <a href="#">Entrez Gene 80380 Human Q9BQ51</a>
Background:	Involved in the costimulatory signal, essential for T-cell proliferation and IFNG production in a PDCD1-independent manner. Interaction with PDCD1 inhibits T-cell proliferation by blocking cell cycle progression and cytokine production. [UniProtKB/Swiss-Prot Function]
Synonyms:	B7DC; bA574F11.2; Btdc; CD273; PD-L2; PDCD1L2; PDL2

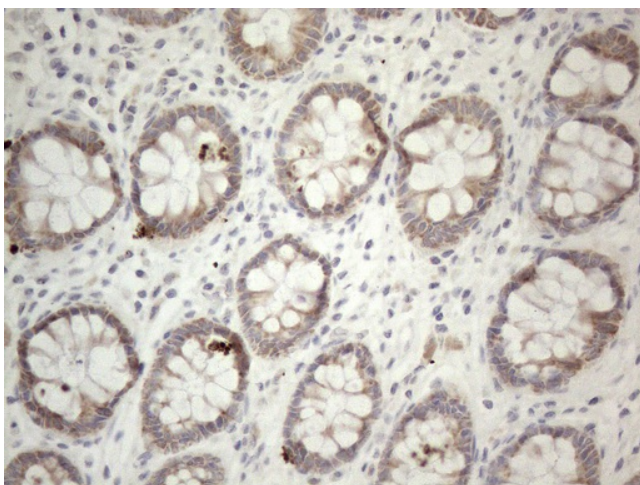


[View online »](#)

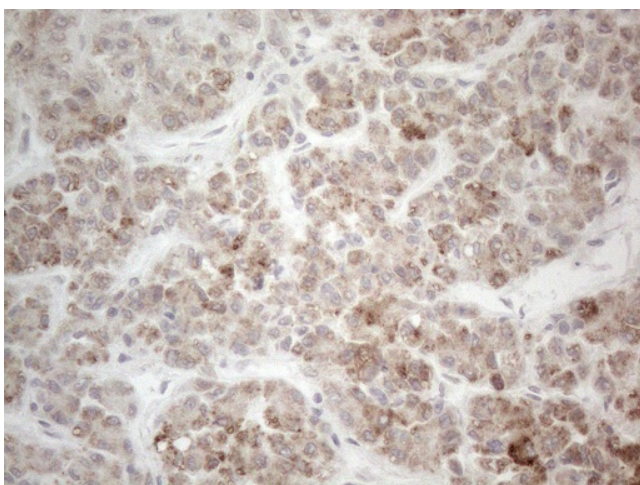
Protein Families: Transmembrane

Protein Pathways: Cell adhesion molecules (CAMs)

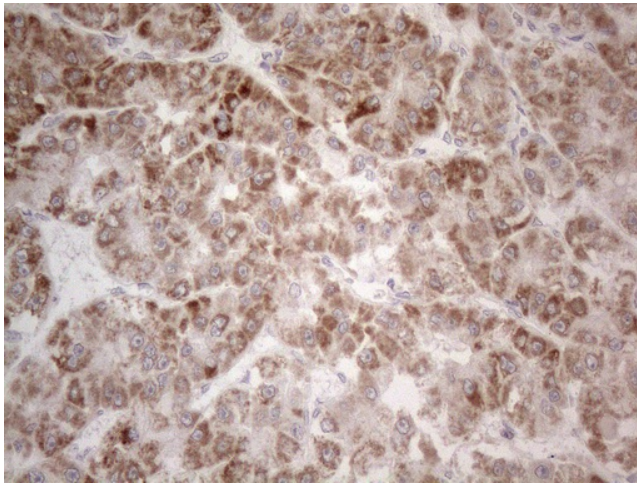
### Product images:



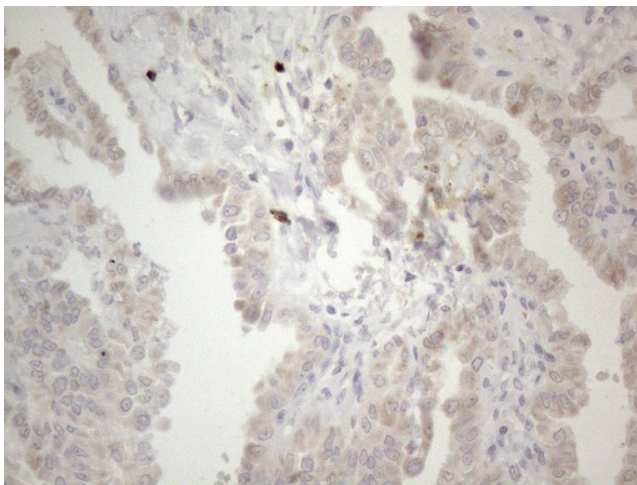
Immunohistochemical staining of paraffin-embedded Human colon tissue within the normal limits using anti-PDCD1LG2 mouse monoclonal antibody. (Heat-induced epitope retrieval by 1mM EDTA in 10mM Tris buffer (pH8.5) at 120°C for 3min, [TA808982]) (1:150)



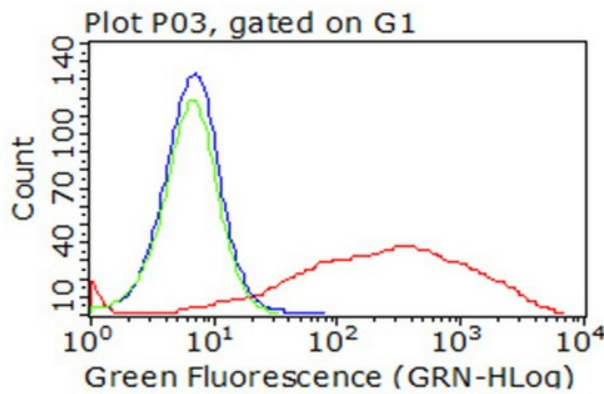
Immunohistochemical staining of paraffin-embedded Human liver tissue within the normal limits using anti-PDCD1LG2 mouse monoclonal antibody. (Heat-induced epitope retrieval by 1mM EDTA in 10mM Tris buffer (pH8.5) at 120°C for 3min, [TA808982]) (1:150)



Immunohistochemical staining of paraffin-embedded Carcinoma of Human liver tissue using anti-PDCD1LG2 mouse monoclonal antibody. (Heat-induced epitope retrieval by 1mM EDTA in 10mM Tris buffer (pH8.5) at 120°C for 3min, [TA808982]) (1:150)



Immunohistochemical staining of paraffin-embedded Carcinoma of Human thyroid tissue using anti-PDCD1LG2 mouse monoclonal antibody. (Heat-induced epitope retrieval by 1mM EDTA in 10mM Tris buffer (pH8.5) at 120°C for 3min, [TA808982]) (1:150)



Flow cytometric analysis of living 293T cells transfected with PDL2 overexpression plasmid ([RC224141], Red)/empty vector ([PS100001], Blue) using anti-PDL2 antibody ([TA808982]). Cells incubated with a non-specific antibody (Green) were used as isotype control (1:100).