

## Product datasheet for **CF808945**

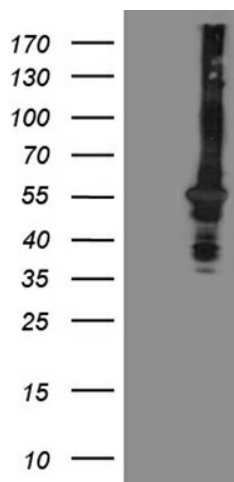
### OSGIN2 Mouse Monoclonal Antibody [Clone ID: OTI6E10]

#### Product data:

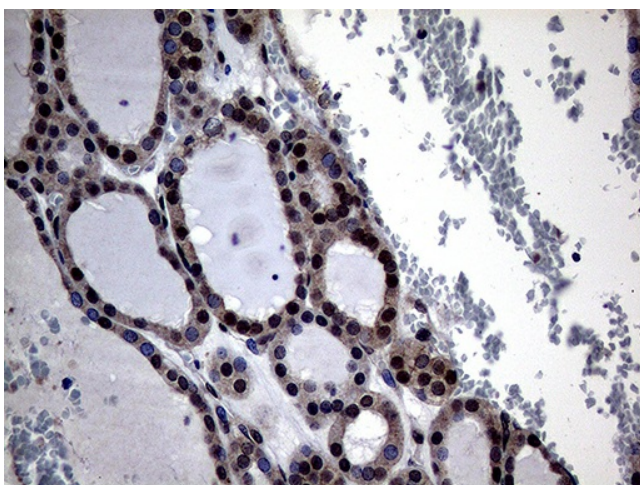
Product Type:	Primary Antibodies
Clone Name:	OTI6E10
Applications:	IHC, WB
Recommended Dilution:	WB 1:2000, IHC 1:2000
Reactivity:	Human, Mouse, Rat
Host:	Mouse
Isotype:	IgG2b
Clonality:	Monoclonal
Immunogen:	Human recombinant protein fragment corresponding to amino acids 1-250 of human OSGIN2(NP_004328) produced in E.coli.
Formulation:	Lyophilized powder (original buffer 1X PBS, pH 7.3, 8% trehalose)
Reconstitution Method:	For reconstitution, we recommend adding 100uL distilled water to a final antibody concentration of about 1 mg/mL. To use this carrier-free antibody for conjugation experiment, we strongly recommend performing another round of desalting process. (OriGene recommends Zeba Spin Desalting Columns, 7KMWCO from Thermo Scientific)
Purification:	Purified from mouse ascites fluids or tissue culture supernatant by affinity chromatography (protein A/G)
Conjugation:	Unconjugated
Storage:	Store at -20°C as received.
Stability:	Stable for 12 months from date of receipt.
Predicted Protein Size:	56.5 kDa
Gene Name:	oxidative stress induced growth inhibitor family member 2
Database Link:	<a href="#">NP_004328</a> <a href="#">Entrez Gene 209212 Mouse</a> <a href="#">Entrez Gene 313085 Rat</a> <a href="#">Entrez Gene 734 Human</a> <a href="#">Q9Y236</a>
Background:	May be involved in meiosis or the maturation of germ cells. [UniProtKB/Swiss-Prot Function]
Synonyms:	C8orf1; hT41



[View online »](#)

**Product images:**


HEK293T cells were transfected with the pCMV6-ENTRY control (Left lane) or pCMV6-ENTRY OSGIN2 ([RC223771], Right lane) cDNA for 48 hrs and lysed. Equivalent amounts of cell lysates (5 ug per lane) were separated by SDS-PAGE and immunoblotted with anti-OSGIN2 (1:2000). Positive lysates [LY418053] (100ug) and [LC418053] (20ug) can be purchased separately from OriGene.



Immunohistochemical staining of paraffin-embedded Human thyroid tissue within the normal limits using anti-OSGIN2 mouse monoclonal antibody. Heat-induced epitope retrieval by EDTA solution buffer pH 8.0 at 120°C for 3 min.