

## Product datasheet for **CF808924**

### AHA1 (AHSA1) Mouse Monoclonal Antibody [Clone ID: OTI1D2]

#### Product data:

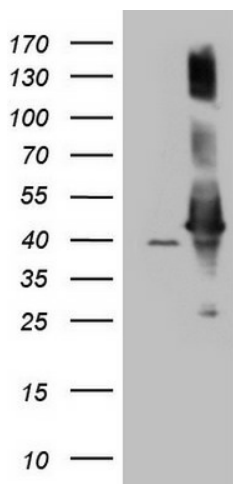
Product Type:	Primary Antibodies
Clone Name:	OTI1D2
Applications:	IHC, WB
Recommended Dilution:	WB 1:2000, IHC 1:150
Reactivity:	Human, Mouse, Rat
Host:	Mouse
Isotype:	IgG1
Clonality:	Monoclonal
Immunogen:	Human recombinant protein fragment corresponding to amino acids 1-203 of human AHSA1 (NP_036243) produced in E.coli.
Formulation:	Lyophilized powder (original buffer 1X PBS, pH 7.3, 8% trehalose)
Reconstitution Method:	For reconstitution, we recommend adding 100uL distilled water to a final antibody concentration of about 1 mg/mL. To use this carrier-free antibody for conjugation experiment, we strongly recommend performing another round of desalting process. (OriGene recommends Zeba Spin Desalting Columns, 7KMWCO from Thermo Scientific)
Purification:	Purified from mouse ascites fluids or tissue culture supernatant by affinity chromatography (protein A/G)
Conjugation:	Unconjugated
Storage:	Store at -20°C as received.
Stability:	Stable for 12 months from date of receipt.
Predicted Protein Size:	38.1 kDa
Gene Name:	activator of HSP90 ATPase activity 1
Database Link:	<a href="#">NP_036243</a> <a href="#">Entrez Gene 217737 MouseEntrez Gene 681996 RatEntrez Gene 10598 Human O95433</a>
Background:	Interacts with HSPCA/HSP90 and with the cytoplasmic tail of the vesicular stomatitis virus glycoprotein (VSV G). Interacts with GCH1. Interacts with SRPK1. [UniProtKB/Swiss-Prot Function]



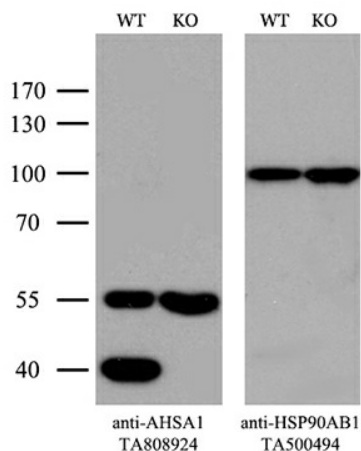
[View online »](#)

Synonyms: AHA1; C14orf3; p38

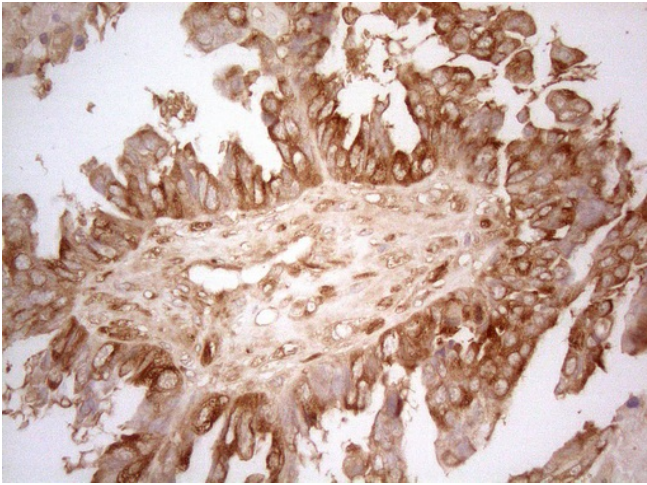
**Product images:**



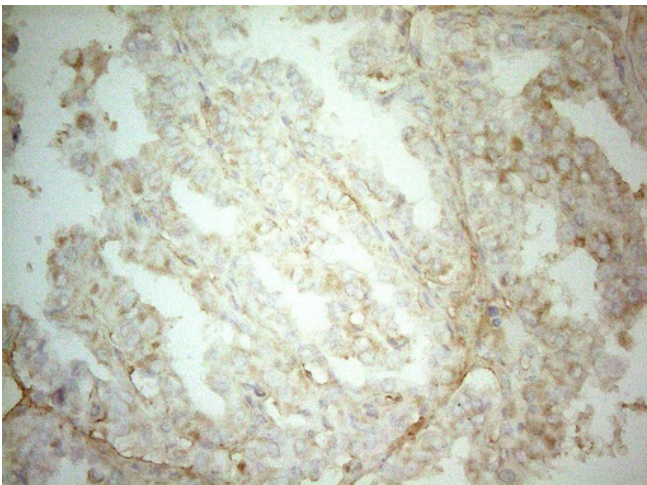
HEK293T cells were transfected with the pCMV6-ENTRY control (Cat# [PS100001], Left lane) or pCMV6-ENTRY AHSA1 (Cat# [RC201782], Right lane) cDNA for 48 hrs and lysed. Equivalent amounts of cell lysates (5 ug per lane) were separated by SDS-PAGE and immunoblotted with anti-AHSA1 (Cat# [TA808924])(1:2000). Positive lysates [LY402150] (100ug) and [LC402150] (20ug) can be purchased separately from OriGene.



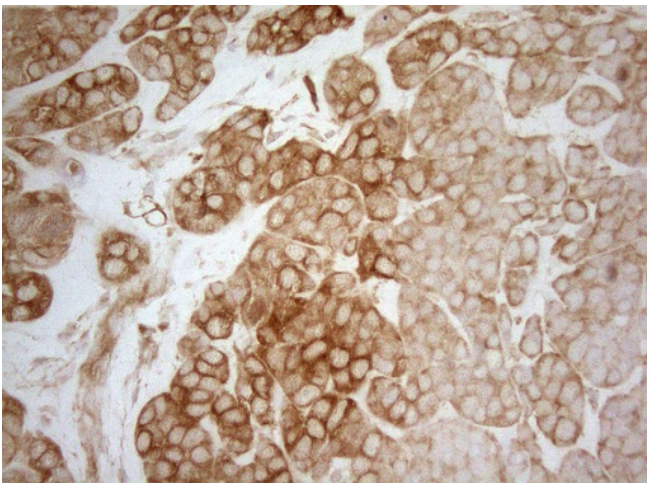
Equivalent amounts of cell lysates (10 ug per lane) of wild-type HeLa cells (WT) and AHSA1-Knockout HeLa cells (KO) were separated by SDS-PAGE and immunoblotted with anti-AHSA1 monoclonal antibody [TA808924]. Then the blotted membrane was stripped and reprobed with anti-HSP90AB1 antibody ([TA500494]) as a loading control (1:500).



Immunohistochemical staining of paraffin-embedded Adenocarcinoma of Human ovary tissue using anti-AHSA1 mouse monoclonal antibody. Heat-induced epitope retrieval by EDTA solution buffer pH 8.0 at 120°C for 3 min.



Immunohistochemical staining of paraffin-embedded Carcinoma of Human thyroid tissue using anti-AHSA1 mouse monoclonal antibody. Heat-induced epitope retrieval by EDTA solution buffer pH 8.0 at 120°C for 3 min.



Immunohistochemical staining of paraffin-embedded Adenocarcinoma of Human endometrium tissue using anti-AHSA1 mouse monoclonal antibody. Heat-induced epitope retrieval by EDTA solution buffer pH 8.0 at 120°C for 3 min.