

## Product datasheet for **CF808883**

### PTK9 (TWF1) Mouse Monoclonal Antibody [Clone ID: OTI4C3]

#### Product data:

Product Type:	Primary Antibodies
Clone Name:	OTI4C3
Applications:	WB
Recommended Dilution:	WB 1:2000
Reactivity:	Human, Mouse, Rat
Host:	Mouse
Isotype:	IgG2a
Clonality:	Monoclonal
Immunogen:	Human recombinant protein fragment corresponding to amino acids 140-384 of human TWF1(NP_002813) produced in E.coli.
Formulation:	Lyophilized powder (original buffer 1X PBS, pH 7.3, 8% trehalose)
Reconstitution Method:	For reconstitution, we recommend adding 100uL distilled water to a final antibody concentration of about 1 mg/mL. To use this carrier-free antibody for conjugation experiment, we strongly recommend performing another round of desalting process. (OriGene recommends Zeba Spin Desalting Columns, 7KMWCO from Thermo Scientific)
Purification:	Purified from mouse ascites fluids or tissue culture supernatant by affinity chromatography (protein A/G)
Conjugation:	Unconjugated
Storage:	Store at -20°C as received.
Stability:	Stable for 12 months from date of receipt.
Predicted Protein Size:	43.7 kDa
Gene Name:	twinfilin actin binding protein 1
Database Link:	<a href="#">NP_002813</a> <a href="#">Entrez Gene 19230 Mouse</a> <a href="#">Entrez Gene 315265 Rat</a> <a href="#">Entrez Gene 5756 Human</a> <a href="#">Q12792</a>



[View online »](#)

**Background:**

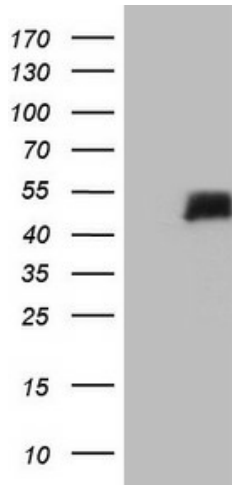
This gene encodes twinfilin, an actin monomer-binding protein conserved from yeast to mammals. Studies of the mouse counterpart suggest that this protein may be an actin monomer-binding protein, and its localization to cortical G-actin-rich structures may be regulated by the small GTPase RAC1. [provided by RefSeq, Jul 2008]

**Synonyms:**

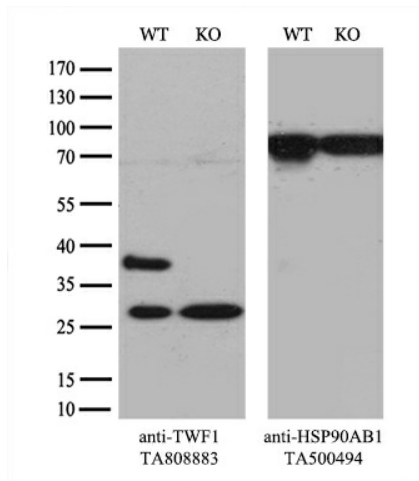
A6; PTK9

**Protein Families:**

Druggable Genome, Protein Kinase

**Product images:**


HEK293T cells were transfected with the pCMV6-ENTRY control (Left lane) or pCMV6-ENTRY TWF1 ([RC207215], Right lane) cDNA for 48 hrs and lysed. Equivalent amounts of cell lysates (5 ug per lane) were separated by SDS-PAGE and immunoblotted with anti-TWF1 (1:2000). Positive lysates [LY401004] (100ug) and [LC401004] (20ug) can be purchased separately from OriGene.



Equivalent amounts of cell lysates (10 ug per lane) of wild-type HeLa cells (WT, Cat# LC810HELA) and TWF1-Knockout HeLa cells (KO, Cat# [LC832145]) were separated by SDS-PAGE and immunoblotted with anti-TWF1 monoclonal antibody [TA808883] (1:500). Then the blotted membrane was stripped and reprobed with anti-HSP90 antibody as a loading control.