

Product datasheet for **CF808850**

SPI1 Mouse Monoclonal Antibody [Clone ID: OT11F3]

Product data:

Product Type:	Primary Antibodies
Clone Name:	OT11F3
Applications:	WB
Recommended Dilution:	WB 1:2000
Reactivity:	Human, Mouse, Rat
Host:	Mouse
Isotype:	IgG2a
Clonality:	Monoclonal
Immunogen:	Full length human recombinant protein of human SPI1(NP_003111) produced in E.coli.
Formulation:	Lyophilized powder (original buffer 1X PBS, pH 7.3, 8% trehalose)
Reconstitution Method:	For reconstitution, we recommend adding 100uL distilled water to a final antibody concentration of about 1 mg/mL. To use this carrier-free antibody for conjugation experiment, we strongly recommend performing another round of desalting process. (OriGene recommends Zeba Spin Desalting Columns, 7KMWCO from Thermo Scientific)
Purification:	Purified from mouse ascites fluids or tissue culture supernatant by affinity chromatography (protein A/G)
Conjugation:	Unconjugated
Storage:	Store at -20°C as received.
Stability:	Stable for 12 months from date of receipt.
Predicted Protein Size:	30.9 kDa
Gene Name:	Spi-1 proto-oncogene
Database Link:	NP_003111 Entrez Gene 20375 Mouse Entrez Gene 366126 Rat Entrez Gene 6688 Human P17947



[View online »](#)

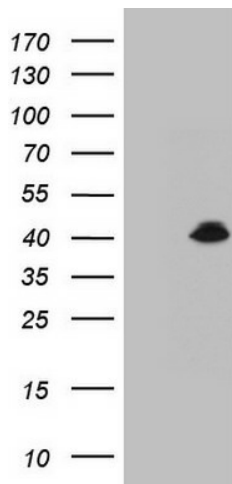
Background: This gene encodes an ETS-domain transcription factor that activates gene expression during myeloid and B-lymphoid cell development. The nuclear protein binds to a purine-rich sequence known as the PU-box found near the promoters of target genes, and regulates their expression in coordination with other transcription factors and cofactors. The protein can also regulate alternative splicing of target genes. Multiple transcript variants encoding different isoforms have been found for this gene. [provided by RefSeq, Jul 2008]

Synonyms: OF; PU.1; SFPI1; SPI-1; SPI-A

Protein Families: Transcription Factors

Protein Pathways: Acute myeloid leukemia, Pathways in cancer

Product images:



HEK293T cells were transfected with the pCMV6-ENTRY control (Cat# [PS100001], Left lane) or pCMV6-ENTRY SPI1 (Cat# [RC212818], Right lane) cDNA for 48 hrs and lysed. Equivalent amounts of cell lysates (5 ug per lane) were separated by SDS-PAGE and immunoblotted with anti-SPI1 (Cat# [TA808850])(1:2000). Positive lysates [LY418885] (100ug) and [LC418885] (20ug) can be purchased separately from OriGene.