

Product datasheet for **CF808825**

RPS6KC1 Mouse Monoclonal Antibody [Clone ID: OTI10F11]

Product data:

Product Type:	Primary Antibodies
Clone Name:	OTI10F11
Applications:	IHC, WB
Recommended Dilution:	WB 1:2000, IHC 1:150
Reactivity:	Human
Host:	Mouse
Isotype:	IgG1
Clonality:	Monoclonal
Immunogen:	Human recombinant protein fragment corresponding to amino acids 1-305 of human RPS6KC1(NP_036556) produced in E.coli.
Formulation:	Lyophilized powder (original buffer 1X PBS, pH 7.3, 8% trehalose)
Reconstitution Method:	For reconstitution, we recommend adding 100uL distilled water to a final antibody concentration of about 1 mg/mL. To use this carrier-free antibody for conjugation experiment, we strongly recommend performing another round of desalting process. (OriGene recommends Zeba Spin Desalting Columns, 7KMWCO from Thermo Scientific)
Purification:	Purified from mouse ascites fluids or tissue culture supernatant by affinity chromatography (protein A/G)
Conjugation:	Unconjugated
Storage:	Store at -20°C as received.
Stability:	Stable for 12 months from date of receipt.
Predicted Protein Size:	118.5 kDa
Gene Name:	ribosomal protein S6 kinase C1
Database Link:	NP_036556 Entrez Gene 26750 Human Q96S38
Background:	May be involved in transmitting sphingosine-1 phosphate (SPP)-mediated signaling into the cell. [UniProtKB/Swiss-Prot Function]

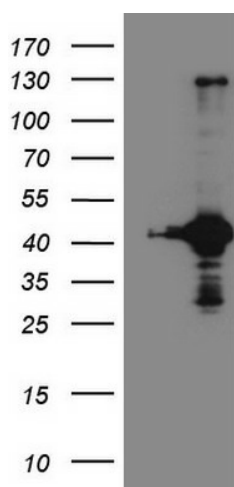


[View online »](#)

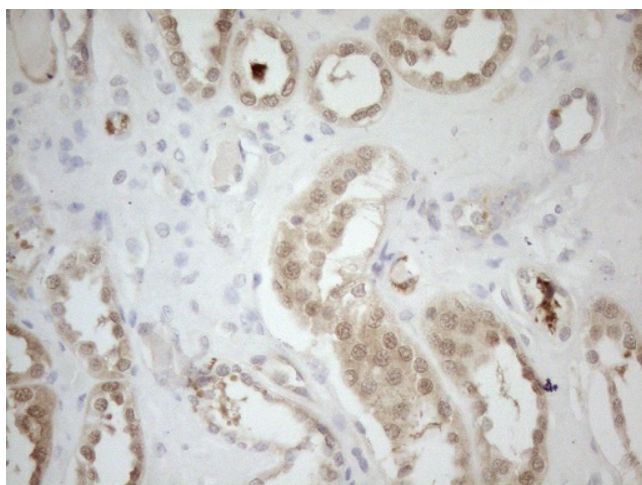
Synonyms: humS6PKh1; RPK118; S6K-delta-1; S6PKh1

Protein Families: Druggable Genome, Protein Kinase

Product images:



HEK293T cells were transfected with the pCMV6-ENTRY control (Cat# [PS100001], Left lane) or pCMV6-ENTRY RPS6KC1 (Cat# [RC211142], Right lane) cDNA for 48 hrs and lysed. Equivalent amounts of cell lysates (5 ug per lane) were separated by SDS-PAGE and immunoblotted with anti-RPS6KC1 (Cat# [TA808825])(1:2000). Positive lysates [LY402211] (100ug) and [LC402211] (20ug) can be purchased separately from OriGene.



Immunohistochemical staining of paraffin-embedded Human Kidney tissue using anti-RPS6KC1 mouse monoclonal antibody. (Heat-induced epitope retrieval by 1mM EDTA in 10mM Tris buffer (pH8.5) at 120°C for 3min, [TA808825]) (1:150)