

## Product datasheet for **CF808811**

### Inositol Hexakisphosphate Kinase 2 (IP6K2) Mouse Monoclonal Antibody [Clone ID: OTI1F12]

#### Product data:

Product Type:	Primary Antibodies
Clone Name:	OTI1F12
Applications:	WB
Recommended Dilution:	WB 1:500
Reactivity:	Human, Mouse, Rat
Host:	Mouse
Isotype:	IgG2a
Clonality:	Monoclonal
Immunogen:	Human recombinant protein fragment corresponding to amino acids 1-250 of human IP6K2(NP_057375) produced in E.coli.
Formulation:	Lyophilized powder (original buffer 1X PBS, pH 7.3, 8% trehalose)
Reconstitution Method:	For reconstitution, we recommend adding 100uL distilled water to a final antibody concentration of about 1 mg/mL. To use this carrier-free antibody for conjugation experiment, we strongly recommend performing another round of desalting process. (OriGene recommends Zeba Spin Desalting Columns, 7KMWCO from Thermo Scientific)
Purification:	Purified from mouse ascites fluids or tissue culture supernatant by affinity chromatography (protein A/G)
Conjugation:	Unconjugated
Storage:	Store at -20°C as received.
Stability:	Stable for 12 months from date of receipt.
Gene Name:	inositol hexakisphosphate kinase 2
Database Link:	<a href="#">NP_057375</a> <a href="#">Entrez Gene 59268 Rat</a> <a href="#">Entrez Gene 76500 Mouse</a> <a href="#">Entrez Gene 51447 Human</a> <a href="#">Q9UHH9</a>



[View online »](#)

**Background:**

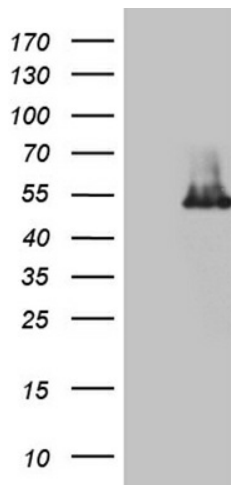
This gene encodes a protein that belongs to the inositol phosphokinase (IPK) family. This protein is likely responsible for the conversion of inositol hexakisphosphate (InsP6) to diphosphoinositol pentakisphosphate (InsP7/PP-InsP5). It may also convert 1,3,4,5,6-pentakisphosphate (InsP5) to PP-InsP4 and affect the growth suppressive and apoptotic activities of interferon-beta in some ovarian cancers. Alternative splicing results in multiple transcript variants encoding different isoforms. [provided by RefSeq, Jul 2008]

**Synonyms:**

IHPK2; PIUS

**Protein Families:**

Druggable Genome

**Product images:**

HEK293T cells were transfected with the pCMV6-ENTRY control (Cat# [PS100001], Left lane) or pCMV6-ENTRY IP6K2 (Cat# [RC209533], Right lane) cDNA for 48 hrs and lysed. Equivalent amounts of cell lysates (5 ug per lane) were separated by SDS-PAGE and immunoblotted with anti-IP6K2 (1:500) (Cat# [TA808811]). Positive lysates [LY414064] (100ug) and [LC414064] (20ug) can be purchased separately from OriGene.