

## Product datasheet for **CF808796**

### PLCXD1 Mouse Monoclonal Antibody [Clone ID: OTI8C4]

#### Product data:

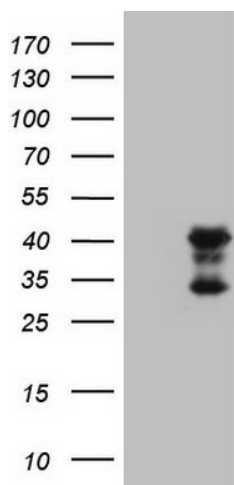
Product Type:	Primary Antibodies
Clone Name:	OTI8C4
Applications:	WB
Recommended Dilution:	WB 1:2000
Reactivity:	Human
Host:	Mouse
Isotype:	IgG2a
Clonality:	Monoclonal
Immunogen:	Full length human recombinant protein of human PLCXD1(NP_060860) produced in E.coli.
Formulation:	Lyophilized powder (original buffer 1X PBS, pH 7.3, 8% trehalose)
Reconstitution Method:	For reconstitution, we recommend adding 100uL distilled water to a final antibody concentration of about 1 mg/mL. To use this carrier-free antibody for conjugation experiment, we strongly recommend performing another round of desalting process. (OriGene recommends Zeba Spin Desalting Columns, 7KMWCO from Thermo Scientific)
Purification:	Purified from mouse ascites fluids or tissue culture supernatant by affinity chromatography (protein A/G)
Conjugation:	Unconjugated
Storage:	Store at -20°C as received.
Stability:	Stable for 12 months from date of receipt.
Predicted Protein Size:	36.5 kDa
Gene Name:	phosphatidylinositol specific phospholipase C X domain containing 1
Database Link:	<a href="#">NP_060860</a> <a href="#">Entrez Gene 55344 Human</a> <a href="#">Q9NUJ7</a>
Background:	This gene is the most terminal protein-coding gene in the pseudoautosomal (PAR) region on chromosomes X and Y. Alternate splicing results in multiple transcript variants. [provided by RefSeq, Mar 2010]



[View online »](#)

Synonyms: LLOXNC01-136G2.1

### Product images:



HEK293T cells were transfected with the pCMV6-ENTRY control (Left lane) or pCMV6-ENTRY PLCXD1 ([RC202835], Right lane) cDNA for 48 hrs and lysed. Equivalent amounts of cell lysates (5 ug per lane) were separated by SDS-PAGE and immunoblotted with anti-PLCXD1 (1:2000). Positive lysates [LY413089] (100ug) and [LC413089] (20ug) can be purchased separately from OriGene.