

Product datasheet for **CF808752**

LGR5 Mouse Monoclonal Antibody [Clone ID: OTI7F2]

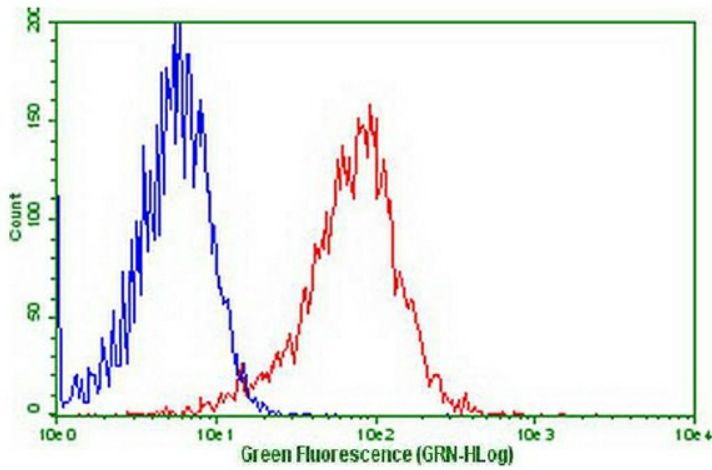
Product data:

Product Type:	Primary Antibodies
Clone Name:	OTI7F2
Applications:	FC
Recommended Dilution:	FLOW 1:50~100
Reactivity:	Human, Mouse, Rat
Host:	Mouse
Isotype:	IgG2a
Clonality:	Monoclonal
Immunogen:	Human recombinant protein fragment corresponding to amino acids 22-543 of human LGR5 (NP_003658) produced in HEK293 cell.
Formulation:	Lyophilized powder (original buffer 1X PBS, pH 7.3, 8% trehalose)
Reconstitution Method:	For reconstitution, we recommend adding 100uL distilled water to a final antibody concentration of about 1 mg/mL. To use this carrier-free antibody for conjugation experiment, we strongly recommend performing another round of desalting process. (OriGene recommends Zeba Spin Desalting Columns, 7KMWCO from Thermo Scientific)
Purification:	Purified from mouse ascites fluids or tissue culture supernatant by affinity chromatography (protein A/G)
Conjugation:	Unconjugated
Storage:	Store at -20°C as received.
Stability:	Stable for 12 months from date of receipt.
Predicted Protein Size:	99.8 kDa
Gene Name:	leucine rich repeat containing G protein-coupled receptor 5
Database Link:	NP_003658 Entrez Gene 14160 Mouse Entrez Gene 299802 Rat Entrez Gene 8549 Human O75473
Synonyms:	FEX; GPR49; GPR67; GRP49; HG38
Protein Families:	Druggable Genome, GPCR, Transmembrane

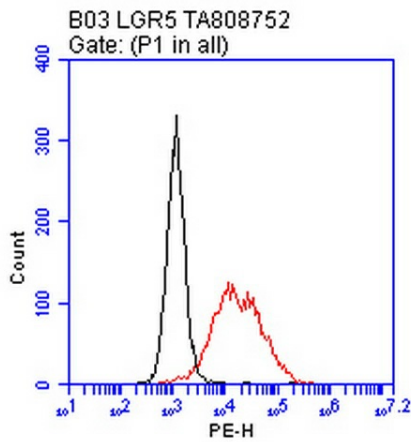


[View online »](#)

Product images:



Flow cytometric Analysis of stable transfection cell line LGR5 ([RC212825]) (Red) compared to negative control HEK293T cell line (blue) using anti-LGR5 antibody ([TA808752]) (SUPERTN) (1:50)



Flow cytometric analysis of the stable expression of LGR5 ([RC212825]) in NIH3T3 cells using anti-LGR5 antibody ([TA808752]) (Red) compared to a nonspecific negative control antibody (Black). (1:100), surface stained on live cells