

Product datasheet for **CF808743**

KAL1 (ANOS1) Mouse Monoclonal Antibody [Clone ID: OTI5E10]

Product data:

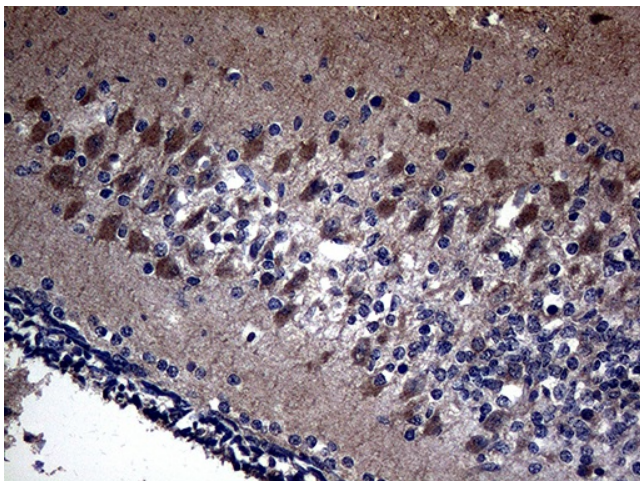
Product Type:	Primary Antibodies
Clone Name:	OTI5E10
Applications:	IHC
Recommended Dilution:	IHC 1:500
Reactivity:	Human
Host:	Mouse
Isotype:	IgG2a
Clonality:	Monoclonal
Immunogen:	Human recombinant protein fragment corresponding to amino acids 129-373 of human KAL1(NP_000207) produced in E.coli.
Formulation:	Lyophilized powder (original buffer 1X PBS, pH 7.3, 8% trehalose)
Reconstitution Method:	For reconstitution, we recommend adding 100uL distilled water to a final antibody concentration of about 1 mg/mL. To use this carrier-free antibody for conjugation experiment, we strongly recommend performing another round of desalting process. (OriGene recommends Zeba Spin Desalting Columns, 7KMWCO from Thermo Scientific)
Purification:	Purified from mouse ascites fluids or tissue culture supernatant by affinity chromatography (protein A/G)
Conjugation:	Unconjugated
Storage:	Store at -20°C as received.
Stability:	Stable for 12 months from date of receipt.
Gene Name:	anosmin 1
Database Link:	NP_000207 Entrez Gene 3730 Human P23352
Background:	Mutations in this gene cause the X-linked Kallmann syndrome. The encoded protein is similar in sequence to proteins known to function in neural cell adhesion and axonal migration. In addition, this cell surface protein is N-glycosylated and may have anti-protease activity. [provided by RefSeq, Jul 2008]



[View online »](#)

Synonyms: ADMLX; HH1; HHA; KAL; KAL1; KALIG-1; KMS; WFDC19

Product images:



Immunohistochemical staining of paraffin-embedded Human embryonic cerebellum within the normal limits using anti-KAL1 mouse monoclonal antibody. (Heat-induced epitope retrieval by 1mM EDTA in 10mM Tris buffer (pH8.5) at 120°C for 3min, [TA808743]) (1:500)