

## Product datasheet for **CF808731**

### POU4F3 Mouse Monoclonal Antibody [Clone ID: OTI3A12]

#### Product data:

Product Type:	Primary Antibodies
Clone Name:	OTI3A12
Applications:	WB
Recommended Dilution:	WB 1:2000
Reactivity:	Human, Mouse, Rat
Host:	Mouse
Isotype:	IgG1
Clonality:	Monoclonal
Immunogen:	Human recombinant protein fragment corresponding to amino acids 179-338 of human POU4F3(NP_002691) produced in E.coli.
Formulation:	Lyophilized powder (original buffer 1X PBS, pH 7.3, 8% trehalose)
Reconstitution Method:	For reconstitution, we recommend adding 100uL distilled water to a final antibody concentration of about 1 mg/mL. To use this carrier-free antibody for conjugation experiment, we strongly recommend performing another round of desalting process. (OriGene recommends Zeba Spin Desalting Columns, 7KMWCO from Thermo Scientific)
Purification:	Purified from mouse ascites fluids or tissue culture supernatant by affinity chromatography (protein A/G)
Conjugation:	Unconjugated
Storage:	Store at -20°C as received.
Stability:	Stable for 12 months from date of receipt.
Predicted Protein Size:	36.9 kDa
Gene Name:	POU class 4 homeobox 3
Database Link:	<a href="#">NP_002691</a> <a href="#">Entrez Gene 18998 Mouse</a> <a href="#">Entrez Gene 364855 Rat</a> <a href="#">Entrez Gene 5459 Human</a> <a href="#">Q15319</a>



[View online »](#)

**Background:**

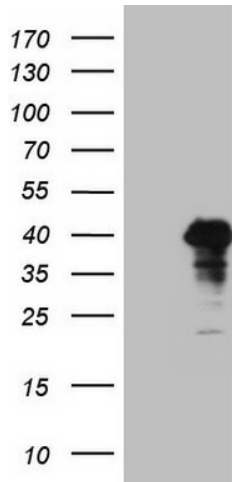
This gene encodes a member of the POU-domain family of transcription factors. POU-domain proteins have been observed to play important roles in control of cell identity in several systems. This protein is found in the retina and may play a role in determining or maintaining the identities of a small subset of visual system neurons. Defects in this gene are the cause of non-syndromic sensorineural deafness autosomal dominant type 15. [provided by RefSeq, Mar 2009]

**Synonyms:**

BRN3C; DFNA15

**Protein Families:**

Transcription Factors

**Product images:**

HEK293T cells were transfected with the pCMV6-ENTRY control (Cat# [PS100001], Left lane) or pCMV6-ENTRY POU4F3 (Cat# [RC211206], Right lane) cDNA for 48 hrs and lysed. Equivalent amounts of cell lysates (5 ug per lane) were separated by SDS-PAGE and immunoblotted with anti-POU4F3 (Cat# [TA808731])(1:2000). Positive lysates [LY400949] (100ug) and [LC400949] (20ug) can be purchased separately from OriGene.