

## Product datasheet for **CF808684**

### TAF1B Mouse Monoclonal Antibody [Clone ID: OTI2C4]

#### Product data:

Product Type:	Primary Antibodies
Clone Name:	OTI2C4
Applications:	WB
Recommended Dilution:	WB 1:2000
Reactivity:	Human
Host:	Mouse
Isotype:	IgG1
Clonality:	Monoclonal
Immunogen:	Human recombinant protein fragment corresponding to amino acids 1-208 of human TAF1B(NP_005671) produced in E.coli.
Formulation:	Lyophilized powder (original buffer 1X PBS, pH 7.3, 8% trehalose)
Reconstitution Method:	For reconstitution, we recommend adding 100uL distilled water to a final antibody concentration of about 1 mg/mL. To use this carrier-free antibody for conjugation experiment, we strongly recommend performing another round of desalting process. (OriGene recommends Zeba Spin Desalting Columns, 7KMWCO from Thermo Scientific)
Purification:	Purified from mouse ascites fluids or tissue culture supernatant by affinity chromatography (protein A/G)
Conjugation:	Unconjugated
Storage:	Store at -20°C as received.
Stability:	Stable for 12 months from date of receipt.
Predicted Protein Size:	68.7 kDa
Gene Name:	TATA-box binding protein associated factor, RNA polymerase I subunit B
Database Link:	<a href="#">NP_005671</a> <a href="#">Entrez Gene 9014 Human</a> <a href="#">Q53T94</a>



[View online »](#)

**Background:**

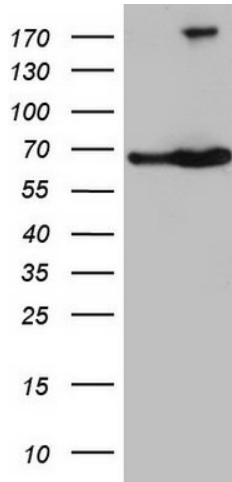
Initiation of transcription by RNA polymerase I requires the formation of a complex composed of the TATA-binding protein (TBP) and three TBP-associated factors (TAFs) specific for RNA polymerase I. This complex, known as SL1, binds to the core promoter of ribosomal RNA genes to position the polymerase properly and acts as a channel for regulatory signals. This gene encodes one of the SL1-specific TAFs. [provided by RefSeq, Jul 2008]

**Synonyms:**

MGC:9349; RAF1B; RAFI63; SL1; TAFI63

**Protein Families:**

Transcription Factors

**Product images:**

HEK293T cells were transfected with the pCMV6-ENTRY control (Left lane) or pCMV6-ENTRY TAF1B ([RC202142], Right lane) cDNA for 48 hrs and lysed. Equivalent amounts of cell lysates (5 ug per lane) were separated by SDS-PAGE and immunoblotted with anti-TAF1B (1:2000). Positive lysates [LY417139] (100ug) and [LC417139] (20ug) can be purchased separately from OriGene.